



SAE1 Monoclonal Antibody

Catalog No	BYmab-02776
Isotype	IgG
Reactivity	Human;Mouse;Rat
Applications	WB
Gene Name	SAE1
Protein Name	SUMO-activating enzyme subunit 1
Immunogen	The antiserum was produced against synthesized peptide derived from human AOS1. AA range:221-270
Specificity	SAE1 Monoclonal Antibody detects endogenous levels of SAE1 protein.
Formulation	Liquid in PBS containing 50% glycerol, 0.5% BSA and 0.02% sodium azide.
Source	Monoclonal, Mouse,IgG
Purification	The antibody was affinity-purified from mouse antiserum by affinity-chromatography using epitope-specific immunogen.
Dilution	WB 1:500-2000
Concentration	1 mg/ml
Purity	≥90%
Storage Stability	-20°C/1 year
Synonyms	SAE1; AOS1; SUA1; UBLE1A; SUMO-activating enzyme subunit 1; Ubiquitin-like 1-activating enzyme E1A
Observed Band	38kD
Cell Pathway	Nucleus .
Tissue Specificity	Expression level increases during S phase and drops in G2 phase (at protein level).
Function	function:The dimeric enzyme acts as a E1 ligase for SUMO1, SUMO2, SUMO3, and probably SUMO4. It mediates ATP-dependent activation of SUMO proteins and formation of a thioester with a conserved cysteine residue on SAE2.,pathway:Protein modification; protein sumoylation.,PTM:Phosphorylated upon DNA damage, probably by ATM or ATR.,similarity:Belongs to the ubiquitin-activating E1 family.,subunit:Heterodimer of SAE1 and SAE2. The complex binds SUMO proteins via SAE2.,tissue specificity:Expression level increases during S phase and drops in G2 phase (at protein level).,

Nanjing BYabscience technology Co.,Ltd

网址: www.njbybio.com

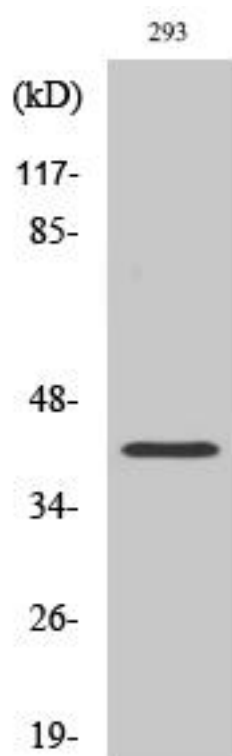
官方热线: 025-5229-8998

监督电话: 15950492658



Background	SUMO1 activating enzyme subunit 1(SAE1) Homo sapiens Posttranslational modification of proteins by the addition of the small protein SUMO (see SUMO1; MIM 601912), or sumoylation, regulates protein structure and intracellular localization. SAE1 and UBA2 (MIM 613295) form a heterodimer that functions as a SUMO-activating enzyme for the sumoylation of proteins (Okuma et al., 1999 [PubMed 9920803]).[supplied by OMIM, Mar 2010],
matters needing attention	Avoid repeated freezing and thawing!
Usage suggestions	This product can be used in immunological reaction related experiments. For more information, please consult technical personnel.

Products Images



Western Blot analysis of various cells using SAE1 Monoclonal Antibody