



# RAP1 Monoclonal Antibody

<b>Catalog No</b>	BYmab-02772
<b>Isotype</b>	IgG
<b>Reactivity</b>	Human;Rat;Mouse;
<b>Applications</b>	WB
<b>Gene Name</b>	TERF2IP
<b>Protein Name</b>	Telomeric repeat-binding factor 2-interacting protein 1
<b>Immunogen</b>	The antiserum was produced against synthesized peptide derived from human RAP1. AA range:203-252
<b>Specificity</b>	RAP1 Monoclonal Antibody detects endogenous levels of RAP1 protein.
<b>Formulation</b>	Liquid in PBS containing 50% glycerol, 0.5% BSA and 0.02% sodium azide.
<b>Source</b>	Monoclonal, Mouse,IgG
<b>Purification</b>	The antibody was affinity-purified from mouse antiserum by affinity-chromatography using epitope-specific immunogen.
<b>Dilution</b>	WB 1:500-2000
<b>Concentration</b>	1 mg/ml
<b>Purity</b>	≥90%
<b>Storage Stability</b>	-20°C/1 year
<b>Synonyms</b>	TERF2IP; DRIP5; RAP1; PP8000; Telomeric repeat-binding factor 2-interacting protein 1; TERF2-interacting telomeric protein 1; TRF2-interacting telomeric protein 1; Dopamine receptor-interacting protein 5; Repressor/activator protein 1 homol
<b>Observed Band</b>	55kD
<b>Cell Pathway</b>	Nucleus . Cytoplasm . Chromosome . Chromosome, telomere . Associates with chromosomes, both at telomeres and in extratelomeric sites. Also exists as a cytoplasmic form, where it associates with the IKK complex. .
<b>Tissue Specificity</b>	Ubiquitous. Highly expressed.
<b>Function</b>	function:May play a role in telomere length regulation. Component of the shelterin complex (telosome) that is involved in the regulation of telomere length and protection. Shelterin associates with arrays of double-stranded TTAGGG repeats added by telomerase and protects chromosome ends; without its protective activity, telomeres are no longer hidden from the DNA damage surveillance and chromosome ends are inappropriately processed by DNA repair

**Nanjing BYabscience technology Co.,Ltd**



pathways.,miscellaneous:Recruited to telomeres by TRF2; seemingly it does not directly bind to DNA itself.,PTM:Phosphorylated upon DNA damage, probably by ATM or ATR.,sequence caution:Translated as Glu.,similarity:Contains 1 BRCT domain.,similarity:Contains 1 Myb-like domain.,subcellular location:Colocalizes with telomeric DNA in interphase and metaphase cells.,subunit:Homodimer. Component of the shelterin complex (telosome) composed of TERF1, TE

#### Background

The gene encodes a protein that is part of a complex involved in telomere length regulation. Pseudogenes are present on chromosomes 5 and 22. [provided by RefSeq, Apr 2010],

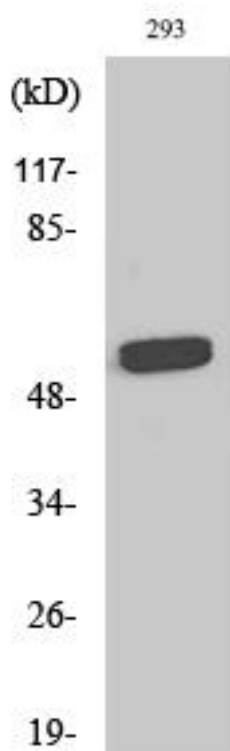
#### matters needing attention

Avoid repeated freezing and thawing!

#### Usage suggestions

This product can be used in immunological reaction related experiments. For more information, please consult technical personnel.

## Products Images



Western Blot analysis of various cells using RAP1 Monoclonal Antibody