



NDUFB10 Monoclonal Antibody

Catalog No	BYmab-02703
Isotype	IgG
Reactivity	Human;Rat;Mouse;
Applications	WB
Gene Name	NDUFB10
Protein Name	NADH dehydrogenase [ubiquinone] 1 beta subcomplex subunit 10
Immunogen	The antiserum was produced against synthesized peptide derived from human NDUFB10. AA range:63-112
Specificity	NDUFB10 Monoclonal Antibody detects endogenous levels of NDUFB10 protein.
Formulation	Liquid in PBS containing 50% glycerol, 0.5% BSA and 0.02% sodium azide.
Source	Monoclonal, Mouse,IgG
Purification	The antibody was affinity-purified from mouse antiserum by affinity-chromatography using epitope-specific immunogen.
Dilution	WB 1:500-2000
Concentration	1 mg/ml
Purity	≥90%
Storage Stability	-20°C/1 year
Synonyms	NDUFB10; NADH dehydrogenase [ubiquinone] 1 beta subcomplex subunit 10; Complex I-PDSW; CI-PDSW; NADH-ubiquinone oxidoreductase PDSW subunit
Observed Band	24kD
Cell Pathway	Mitochondrion inner membrane ; Peripheral membrane protein ; Matrix side .
Tissue Specificity	Cerebellum,Ovary,Skeletal muscle,Skin,Umbilical cord blood,
Function	function:Accessory subunit of the mitochondrial membrane respiratory chain NADH dehydrogenase (Complex I), that is believed to be not involved in catalysis. Complex I functions in the transfer of electrons from NADH to the respiratory chain. The immediate electron acceptor for the enzyme is believed to be ubiquinone.,similarity:Belongs to the complex I NDUFB10 subunit family.,subunit:Complex I is composed of 45 different subunits.,
Background	function:Accessory subunit of the mitochondrial membrane respiratory chain NADH dehydrogenase (Complex I), that is believed to be not involved in catalysis. Complex I functions in the transfer of electrons from NADH to the respiratory chain. The immediate electron acceptor for the enzyme is believed to be

Nanjing BYabscience technology Co.,Ltd



ubiquinone.,similarity:Belongs to the complex I NDUFB10 subunit family.,subunit:Complex I is composed of 45 different subunits.,

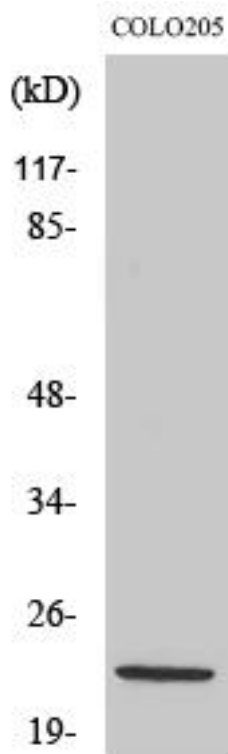
matters needing attention

Avoid repeated freezing and thawing!

Usage suggestions

This product can be used in immunological reaction related experiments. For more information, please consult technical personnel.

Products Images



Western Blot analysis of various cells using NDUFB10 Monoclonal Antibody