



# NDUFA4 Monoclonal Antibody

Catalog No	BYmab-02698
Isotype	IgG
Reactivity	Human;Mouse;Rat
Applications	WB
Gene Name	NDUFA4
Protein Name	NADH dehydrogenase [ubiquinone] 1 alpha subcomplex subunit 4
Immunogen	The antiserum was produced against synthesized peptide derived from human NDUFA4. AA range:32-81
Specificity	NDUFA4 Monoclonal Antibody detects endogenous levels of NDUFA4 protein.
Formulation	Liquid in PBS containing 50% glycerol, 0.5% BSA and 0.02% sodium azide.
Source	Monoclonal, Mouse,IgG
Purification	The antibody was affinity-purified from mouse antiserum by affinity-chromatography using epitope-specific immunogen.
Dilution	WB 1:500-2000
Concentration	1 mg/ml
Purity	≥90%
Storage Stability	-20°C/1 year
Synonyms	NDUFA4; NADH dehydrogenase [ubiquinone] 1 alpha subcomplex subunit 4; Complex I-MLRQ; CI-MLRQ; NADH-ubiquinone oxidoreductase MLRQ subunit
Observed Band	9kD
Cell Pathway	Mitochondrion inner membrane ; Single-pass membrane protein .
Tissue Specificity	Brain,Liver,
Function	function:Accessory subunit of the mitochondrial membrane respiratory chain NADH dehydrogenase (Complex I), that is believed to be not involved in catalysis. Complex I functions in the transfer of electrons from NADH to the respiratory chain. The immediate electron acceptor for the enzyme is believed to be ubiquinone.,similarity:Belongs to the complex I NDUFA4 subunit family.,subunit:Mammalian complex I is composed of 45 different subunits.,
Background	The protein encoded by this gene belongs to the complex I 9kDa subunit family. Mammalian complex I of mitochondrial respiratory chain is composed of 45 different subunits. This protein has NADH dehydrogenase activity and oxidoreductase activity. It transfers electrons from NADH to the respiratory chain.

Nanjing BYabscience technology Co.,Ltd



The immediate electron acceptor for the enzyme is believed to be ubiquinone. [provided by RefSeq, Jul 2008],

**matters needing attention**

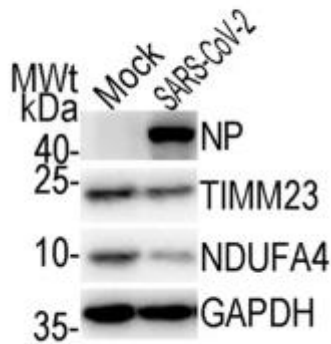
Avoid repeated freezing and thawing!

**Usage suggestions**

This product can be used in immunological reaction related experiments. For more information, please consult technical personnel.

## Products Images

**B**



Western Blot analysis of various cells using NDUFA4 Monoclonal Antibody