



NBPF7 Monoclonal Antibody

Catalog No	BYmab-02693
Isotype	IgG
Reactivity	Human;Rat;Mouse;
Applications	WB
Gene Name	NBPF7
Protein Name	Putative neuroblastoma breakpoint family member 7
Immunogen	The antiserum was produced against synthesized peptide derived from human NBPF7. AA range:361-410
Specificity	NBPF7 Monoclonal Antibody detects endogenous levels of NBPF7 protein.
Formulation	Liquid in PBS containing 50% glycerol, 0.5% BSA and 0.02% sodium azide.
Source	Monoclonal, Mouse,IgG
Purification	The antibody was affinity-purified from mouse antiserum by affinity-chromatography using epitope-specific immunogen.
Dilution	WB 1:500-2000
Concentration	1 mg/ml
Purity	≥90%
Storage Stability	-20°C/1 year
Synonyms	NBPF7; Putative neuroblastoma breakpoint family member 7
Observed Band	48kD
Cell Pathway	Cytoplasm .
Tissue Specificity	
Function	miscellaneous:Encoded by one of the numerous copies of NBPF genes clustered in the p36, p12 and q21 region of the chromosome 1.,similarity:Belongs to the NBPF family.,similarity:Contains 2 NBPF domains.,
Background	neuroblastoma breakpoint family member 7(NBPF7) Homo sapiens This gene is a member of the neuroblastoma breakpoint family (NBPF) which consists of dozens of recently duplicated genes primarily located in segmental duplications on human chromosome 1. This gene family has experienced its greatest expansion within the human lineage and has expanded, to a lesser extent, among primates in general. Members of this gene family are characterized by tandemly repeated copies of DUF1220 protein domains. Gene copy number variations in

Nanjing BYabscience technology Co.,Ltd



the human chromosomal region 1q21.1, where most DUF1220 domains are located, have been implicated in a number of developmental and neurogenetic diseases such as microcephaly, macrocephaly, autism, schizophrenia, mental retardation, congenital heart disease, neuroblastoma, and congenital kidney and urinary tract anomalies. Altered expression of some gene family members is associated with several types of cancer. This gene fam

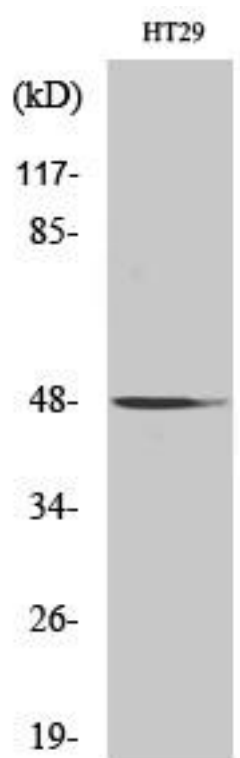
matters needing attention

Avoid repeated freezing and thawing!

Usage suggestions

This product can be used in immunological reaction related experiments. For more information, please consult technical personnel.

Products Images



Western Blot analysis of various cells using NBPF7 Monoclonal Antibody