



MARCH3 Monoclonal Antibody

Catalog No	BYmab-02670
Isotype	IgG
Reactivity	Human;Mouse;Rat;Monkey
Applications	WB
Gene Name	3-3月
Protein Name	E3 ubiquitin-protein ligase MARCH3
Immunogen	The antiserum was produced against synthesized peptide derived from human MARCH3. AA range:111-160
Specificity	MARCH3 Monoclonal Antibody detects endogenous levels of 40605 protein.
Formulation	Liquid in PBS containing 50% glycerol, 0.5% BSA and 0.02% sodium azide.
Source	Monoclonal, Mouse,IgG
Purification	The antibody was affinity-purified from mouse antiserum by affinity-chromatography using epitope-specific immunogen.
Dilution	WB 1:500-2000
Concentration	1 mg/ml
Purity	≥90%
Storage Stability	-20°C/1 year
Synonyms	MARCH3; RNF173; E3 ubiquitin-protein ligase MARCH3; Membrane-associated RING finger protein 3; Membrane-associated RING-CH protein III; MARCH-III; RING finger protein 173
Observed Band	29kD
Cell Pathway	Cytoplasmic vesicle membrane ; Multi-pass membrane protein . Early endosome membrane ; Multi-pass membrane protein .
Tissue Specificity	Brain,Thalamus,
Function	domain:The RING-CH-type zinc finger domain is required for E3 ligase activity.,function:E3 ubiquitin-protein ligase which may be involved in endosomal trafficking. E3 ubiquitin ligases accept ubiquitin from an E2 ubiquitin-conjugating enzyme in the form of a thioester and then directly transfer the ubiquitin to targeted substrates.,pathway:Protein modification; protein ubiquitination.,similarity:Contains 1 RING-CH-type zinc finger.,subunit:Interacts with MARCH2 and STX6.,

Nanjing BYabscience technology Co.,Ltd

网址: www.njbybio.com

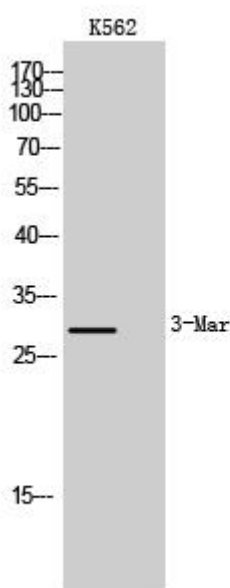
官方热线: 025-5229-8998

监督电话: 15950492658



Background	This gene encodes a member of the membrane-associated RING-CH (MARCH) family. The encoded protein is an E3 ubiquitin-protein ligase that may be involved in regulation of the endosomal transport pathway. [provided by RefSeq, Mar 2013],
matters needing attention	Avoid repeated freezing and thawing!
Usage suggestions	This product can be used in immunological reaction related experiments. For more information, please consult technical personnel.

Products Images



Western Blot analysis of various cells using MARCH3 Monoclonal Antibody