



iPLA2 γ Monoclonal Antibody

Catalog No	BYmab-02656
Isotype	IgG
Reactivity	Human;Mouse
Applications	WB
Gene Name	PNPLA8
Protein Name	Calcium-independent phospholipase A2-gamma
Immunogen	The antiserum was produced against synthesized peptide derived from human PNPLA8. AA range:691-740
Specificity	iPLA2 γ Monoclonal Antibody detects endogenous levels of iPLA2 γ protein.
Formulation	Liquid in PBS containing 50% glycerol, 0.5% BSA and 0.02% sodium azide.
Source	Monoclonal, Mouse,IgG
Purification	The antibody was affinity-purified from mouse antiserum by affinity-chromatography using epitope-specific immunogen.
Dilution	WB 1:500-2000
Concentration	1 mg/ml
Purity	$\geq 90\%$
Storage Stability	-20°C/1 year
Synonyms	PNPLA8; IPLA22; IPLA2G; BM-043; Calcium-independent phospholipase A2-gamma; Intracellular membrane-associated calcium-independent phospholipase A2 gamma; iPLA2-gamma; PNPLA-gamma; Patatin-like phospholipase domain-containing protein 8; iPLA
Observed Band	88kD
Cell Pathway	Endoplasmic reticulum membrane ; Single-pass membrane protein . Mitochondrion membrane ; Single-pass membrane protein . Peroxisome membrane ; Single-pass membrane protein .
Tissue Specificity	Expressed in parenchymal tissues including heart, skeletal muscle, placenta, brain, liver and pancreas. Also expressed in bronchial epithelial cells and kidney. Highest expression is observed in skeletal muscle and heart.
Function	catalytic activity:2-lysophosphatidylcholine + H(2)O = glycerophosphocholine + a carboxylate..enzyme regulation:Inhibited by E-6-bromomethylene-3-1-naphthalenyl-2H-tetrahydropyran-2-one (BEL)..function:Calcium-independent phospholipase A2, which catalyzes the hydrolysis of the sn-2 position of glycerophospholipids, PtdSer and to a lower

Nanjing BYabscience technology Co.,Ltd



extent PtdCho. Cleaves membrane phospholipids.,similarity:Contains 1 patatin domain.,tissue specificity:Expressed in parenchymal tissues including heart, skeletal muscle, placenta, brain, liver and pancreas. Also expressed in bronchial epithelial cells and kidney. Highest expression is observed in skeletal muscle and heart.,

Background

This gene encodes a member of the patatin-like phospholipase domain containing protein family. Members of this family are phospholipases which catalyze the cleavage of fatty acids from membrane phospholipids. The product of this gene is a calcium-independent phospholipase. Mutations in this gene have been associated with mitochondrial myopathy with lactic acidosis. Multiple transcript variants encoding different isoforms have been found for this gene. [provided by RefSeq, May 2015],

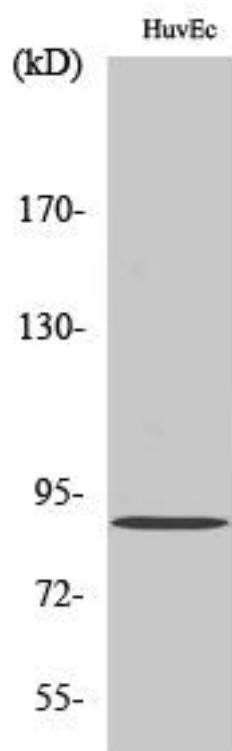
matters needing attention

Avoid repeated freezing and thawing!

Usage suggestions

This product can be used in immunological reaction related experiments. For more information, please consult technical personnel.

Products Images



Western Blot analysis of various cells using iPLA2 γ Monoclonal Antibody