



Glucosidase II β Monoclonal Antibody

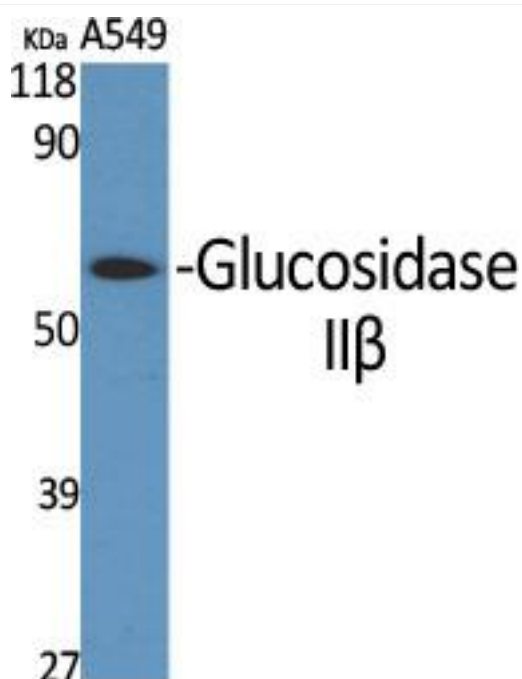
Catalog No	BYmab-02642
Isotype	IgG
Reactivity	Human;Mouse
Applications	WB
Gene Name	PRKCSH
Protein Name	Glucosidase 2 subunit beta
Immunogen	The antiserum was produced against synthesized peptide derived from human GLU2B. AA range:81-130
Specificity	Glucosidase II β Monoclonal Antibody detects endogenous levels of Glucosidase II β protein.
Formulation	Liquid in PBS containing 50% glycerol, 0.5% BSA and 0.02% sodium azide.
Source	Monoclonal, Mouse,IgG
Purification	The antibody was affinity-purified from mouse antiserum by affinity-chromatography using epitope-specific immunogen.
Dilution	WB 1:500-2000
Concentration	1 mg/ml
Purity	$\geq 90\%$
Storage Stability	-20°C/1 year
Synonyms	PRKCSH; G19P1; Glucosidase 2 subunit beta; 80K-H protein; Glucosidase II subunit beta; Protein kinase C substrate 60.1 kDa protein heavy chain; PKCSH
Observed Band	59kD
Cell Pathway	Endoplasmic reticulum .
Tissue Specificity	Lung,Lymphocyte,Platelet,
Function	disease:Defects in PRKCSH are a cause of polycystic liver disease (PCLD) [MIM:174050]. PCLD is an autosomal dominant disorder and is characterized by the presence of multiple liver cysts of biliary epithelial origin. PCLD is a distinct clinical and genetic entity that can occur independently from autosomal dominant polycystic kidney disease (ADPKD) [MIM:173900], which in a considerable but uncertain proportion of cases is associated with hepatic cysts.,function:Regulatory subunit of glucosidase II.,pathway:Glycan metabolism; N-glycan metabolism.,similarity:Contains 1 PRKCSH domain.,similarity:Contains 2 EF-hand domains.,subunit:Heterodimer of a catalytic alpha subunit (GANAB) and a beta subunit (PRKCSH). Binds glycosylated PTPRC.,

Nanjing BYabscience technology Co.,Ltd



Background	This gene encodes the beta-subunit of glucosidase II, an N-linked glycan-processing enzyme in the endoplasmic reticulum. The encoded protein is an acidic phosphoprotein known to be a substrate for protein kinase C. Mutations in this gene have been associated with the autosomal dominant polycystic liver disease. Alternative splicing results in multiple transcript variants. [provided by RefSeq, Jan 2014],
matters needing attention	Avoid repeated freezing and thawing!
Usage suggestions	This product can be used in immunological reaction related experiments. For more information, please consult technical personnel.

Products Images



Western Blot analysis of various cells using
Glucosidase II β Monoclonal Antibody