



GGH Monoclonal Antibody

Catalog No	BYmab-02640
Isotype	IgG
Reactivity	Human;Rat;Mouse;
Applications	WB
Gene Name	GGH
Protein Name	Gamma-glutamyl hydrolase
Immunogen	The antiserum was produced against synthesized peptide derived from human GGH. AA range:251-300
Specificity	GGH Monoclonal Antibody detects endogenous levels of GGH protein.
Formulation	Liquid in PBS containing 50% glycerol, 0.5% BSA and 0.02% sodium azide.
Source	Monoclonal, Mouse,IgG
Purification	The antibody was affinity-purified from mouse antiserum by affinity-chromatography using epitope-specific immunogen.
Dilution	WB 1:500-2000
Concentration	1 mg/ml
Purity	≥90%
Storage Stability	-20°C/1 year
Synonyms	GGH; Gamma-glutamyl hydrolase; Conjugase; GH; Gamma-Glu-X carboxypeptidase
Observed Band	36kD
Cell Pathway	Secreted, extracellular space . Lysosome . Melanosome . While its intracellular location is primarily the lysosome, most of the enzyme activity is secreted. Identified by mass spectrometry in melanosome fractions from stage I to stage IV.
Tissue Specificity	Skin,
Function	catalytic activity:Hydrolysis of a gamma-glutamyl bond.,function:Hydrolyzes the polyglutamate sidechains of pteroylpolyglutamates. Progressively removes gamma-glutamyl residues from pteroylpoly-gamma-glutamate to yield pteroyl-alpha-glutamate (folic acid) and free glutamate. May play an important role in the bioavailability of dietary pteroylpolyglutamates and in the metabolism of pteroylpolyglutamates and antifolates.,similarity:Belongs to the peptidase C26 family.,similarity:Contains 1 gamma-glutamyl hydrolase domain.,subcellular location:While its intracellular location is primarily the lysosome, most of the

Nanjing BYabscience technology Co.,Ltd



enzyme activity is secreted. Identified by mass spectrometry in melanosome fractions from stage I to stage IV.,

Background

This gene catalyzes the hydrolysis of folypoly-gamma-glutamates and antifolypoly-gamma-glutamates by the removal of gamma-linked polyglutamates and glutamate. [provided by RefSeq, Jul 2008],

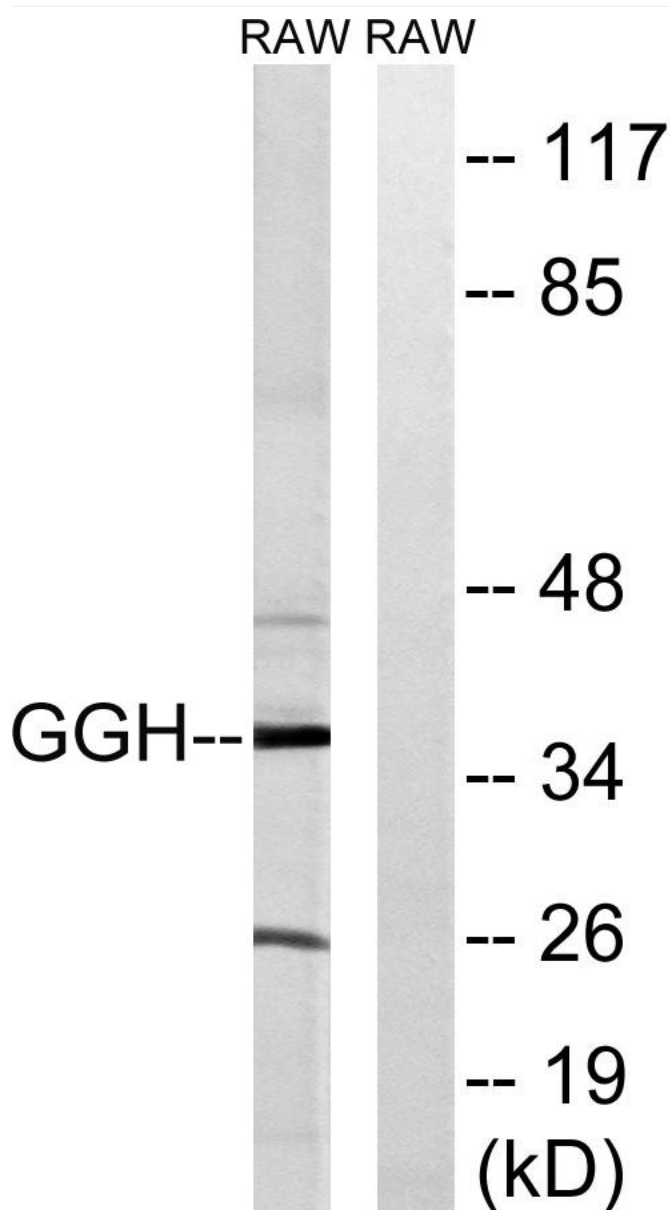
matters needing attention

Avoid repeated freezing and thawing!

Usage suggestions

This product can be used in immunological reaction related experiments. For more information, please consult technical personnel.

Products Images



Nanjing BYabs science technology Co.,Ltd