



# ELOVL1 Monoclonal Antibody

<b>Catalog No</b>	BYmab-02626
<b>Isotype</b>	IgG
<b>Reactivity</b>	Human;Mouse
<b>Applications</b>	WB
<b>Gene Name</b>	ELOVL1
<b>Protein Name</b>	Elongation of very long chain fatty acids protein 1
<b>Immunogen</b>	The antiserum was produced against synthesized peptide derived from human ELOVL1. AA range:101-150
<b>Specificity</b>	ELOVL1 Monoclonal Antibody detects endogenous levels of ELOVL1 protein.
<b>Formulation</b>	Liquid in PBS containing 50% glycerol, 0.5% BSA and 0.02% sodium azide.
<b>Source</b>	Monoclonal, Mouse,IgG
<b>Purification</b>	The antibody was affinity-purified from mouse antiserum by affinity-chromatography using epitope-specific immunogen.
<b>Dilution</b>	WB 1:500-2000
<b>Concentration</b>	1 mg/ml
<b>Purity</b>	≥90%
<b>Storage Stability</b>	-20°C/1 year
<b>Synonyms</b>	ELOVL1; SSC1; CGI-88; Elongation of very long chain fatty acids protein 1; 3-keto acyl-CoA synthase ELOVL1; ELOVL fatty acid elongase 1; ELOVL FA elongase 1
<b>Observed Band</b>	39kD
<b>Cell Pathway</b>	Endoplasmic reticulum membrane ; Multi-pass membrane protein .
<b>Tissue Specificity</b>	Ubiquitous.
<b>Function</b>	domain:The di-lysine motif confers endoplasmic reticulum localization for type I membrane proteins.,function:Could be implicated in tissue-specific synthesis of very long chain fatty acids and sphingolipids. May catalyze one or both of the reduction reaction in fatty acid elongation, i.e., conversion of beta-ketoacyl CoA to beta-hydroxyacyl CoA or reduction of trans-2-enoyl CoA to the saturated acyl CoA derivative.,similarity:Belongs to the ELO family.,
<b>Background</b>	domain:The di-lysine motif confers endoplasmic reticulum localization for type I membrane proteins.,function:Could be implicated in tissue-specific synthesis of

**Nanjing BYabscience technology Co.,Ltd**



very long chain fatty acids and sphingolipids. May catalyze one or both of the reduction reaction in fatty acid elongation, i.e., conversion of beta-ketoacyl CoA to beta-hydroxyacyl CoA or reduction of trans-2-enoyl CoA to the saturated acyl CoA derivative.,similarity:Belongs to the ELO family.,

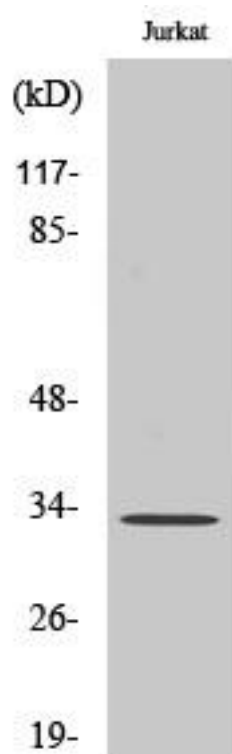
**matters needing attention**

Avoid repeated freezing and thawing!

**Usage suggestions**

This product can be used in immunological reaction related experiments. For more information, please consult technical personnel.

## Products Images



Western Blot analysis of various cells using ELOVL1 Monoclonal Antibody