



CYP4Z1/2 Monoclonal Antibody

Catalog No	BYmab-02607
Isotype	IgG
Reactivity	Human;Rat;Mouse;
Applications	WB
Gene Name	CYP4Z1/CYP4Z2P
Protein Name	Cytochrome P450 4Z1/Putative cytochrome P450 family member 4Z2
Immunogen	Synthesized peptide derived from the Internal region of human CYP4Z1/2.
Specificity	CYP4Z1/2 Monoclonal Antibody detects endogenous levels of CYP4Z1/2 protein.
Formulation	Liquid in PBS containing 50% glycerol, 0.5% BSA and 0.02% sodium azide.
Source	Monoclonal, Mouse,IgG
Purification	The antibody was affinity-purified from mouse antiserum by affinity-chromatography using epitope-specific immunogen.
Dilution	WB 1:500-2000
Concentration	1 mg/ml
Purity	≥90%
Storage Stability	-20°C/1 year
Synonyms	
Observed Band	
Cell Pathway	
Tissue Specificity	
Function	catalytic activity:RH + reduced flavoprotein + O(2) = ROH + oxidized flavoprotein + H(2)O.,cofactor:Heme group.,similarity:Belongs to the cytochrome P450 family.,tissue specificity:Preferentially detected in breast carcinoma tissue and mammary gland, whereas only marginal expression is found in all other tested tissues.,
Background	catalytic activity:RH + reduced flavoprotein + O(2) = ROH + oxidized flavoprotein + H(2)O.,cofactor:Heme group.,similarity:Belongs to the cytochrome P450 family.,tissue specificity:Preferentially detected in breast carcinoma tissue and mammary gland, whereas only marginal expression is found in all other tested tissues.,

Nanjing BYabscience technology Co.,Ltd



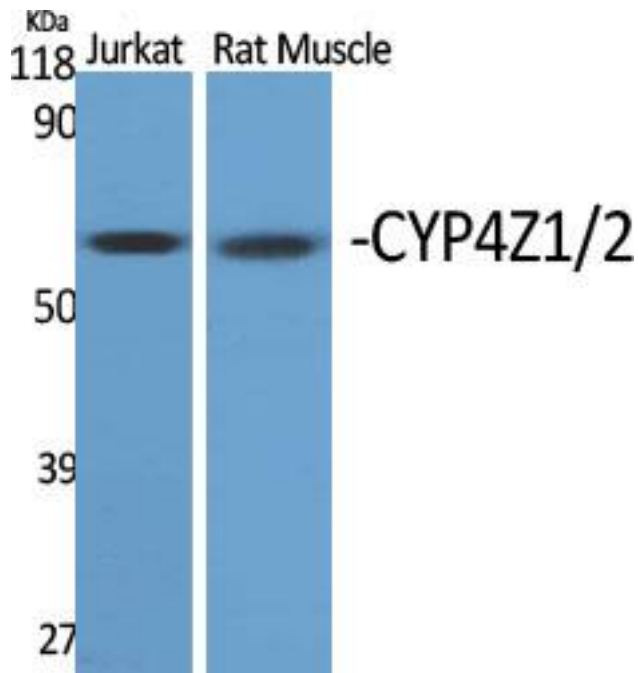
matters needing attention

Avoid repeated freezing and thawing!

Usage suggestions

This product can be used in immunological reaction related experiments. For more information, please consult technical personnel.

Products Images



Western Blot analysis of various cells using CYP4Z1/2 Monoclonal Antibody