



# CYP4F11 Monoclonal Antibody

<b>Catalog No</b>	BYmab-02601
<b>Isotype</b>	IgG
<b>Reactivity</b>	Human;Rat;Mouse;
<b>Applications</b>	WB
<b>Gene Name</b>	CYP4F11
<b>Protein Name</b>	Cytochrome P450 4F11
<b>Immunogen</b>	The antiserum was produced against synthesized peptide derived from human Cytochrome P450 4F11. AA range:341-390
<b>Specificity</b>	CYP4F11 Monoclonal Antibody detects endogenous levels of CYP4F11 protein.
<b>Formulation</b>	Liquid in PBS containing 50% glycerol, 0.5% BSA and 0.02% sodium azide.
<b>Source</b>	Monoclonal, Mouse,IgG
<b>Purification</b>	The antibody was affinity-purified from mouse antiserum by affinity-chromatography using epitope-specific immunogen.
<b>Dilution</b>	WB 1:500-2000
<b>Concentration</b>	1 mg/ml
<b>Purity</b>	≥90%
<b>Storage Stability</b>	-20°C/1 year
<b>Synonyms</b>	CYP4F11; Cytochrome P450 4F11; CYP11F11
<b>Observed Band</b>	60kD
<b>Cell Pathway</b>	Endoplasmic reticulum membrane ; Single-pass membrane protein . Microsome membrane ; Single-pass membrane protein .
<b>Tissue Specificity</b>	Expressed mainly in human liver, followed by kidney, heart, and skeletal muscle.
<b>Function</b>	catalytic activity:RH + reduced flavoprotein + O(2) = ROH + oxidized flavoprotein + H(2)O.,cofactor:Heme group.,similarity:Belongs to the cytochrome P450 family.,tissue specificity:Expressed mainly in human liver, followed by kidney, heart, and skeletal muscle.,
<b>Background</b>	cytochrome P450 family 4 subfamily F member 11(CYP4F11) Homo sapiens This gene, CYP4F11, encodes a member of the cytochrome P450 superfamily of enzymes. The cytochrome P450 proteins are monooxygenases which catalyze many reactions involved in drug metabolism and synthesis of cholesterol, steroids and other lipids. This gene is part of a cluster of cytochrome P450 genes on chromosome 19. Another member of this family, CYP4F2, is approximately 16 kb

**Nanjing BYabscience technology Co.,Ltd**



away. Alternatively spliced transcript variants encoding the same protein have been found for this gene. [provided by RefSeq, Jul 2008],

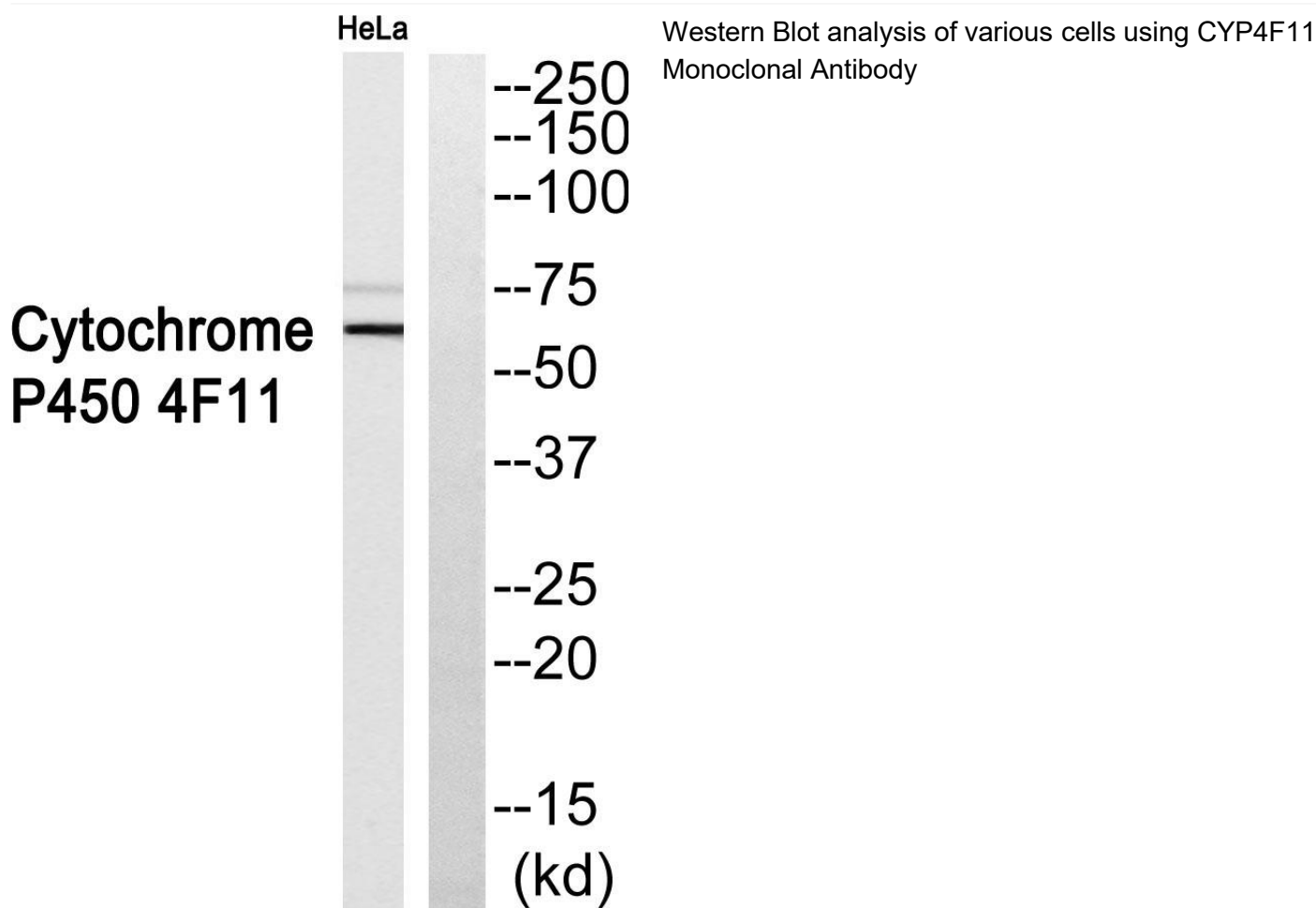
**matters needing attention**

Avoid repeated freezing and thawing!

**Usage suggestions**

This product can be used in immunological reaction related experiments. For more information, please consult technical personnel.

## Products Images



Nanjing BYabscience technology Co.,Ltd