



# CYP2S1 Monoclonal Antibody

<b>Catalog No</b>	BYmab-02590
<b>Isotype</b>	IgG
<b>Reactivity</b>	Human;Mouse
<b>Applications</b>	WB
<b>Gene Name</b>	CYP2S1
<b>Protein Name</b>	Cytochrome P450 2S1
<b>Immunogen</b>	The antiserum was produced against synthesized peptide derived from human Cytochrome P450 2S1. AA range:181-230
<b>Specificity</b>	CYP2S1 Monoclonal Antibody detects endogenous levels of CYP2S1 protein.
<b>Formulation</b>	Liquid in PBS containing 50% glycerol, 0.5% BSA and 0.02% sodium azide.
<b>Source</b>	Monoclonal, Mouse,IgG
<b>Purification</b>	The antibody was affinity-purified from mouse antiserum by affinity-chromatography using epitope-specific immunogen.
<b>Dilution</b>	WB 1:500-2000
<b>Concentration</b>	1 mg/ml
<b>Purity</b>	≥90%
<b>Storage Stability</b>	-20°C/1 year
<b>Synonyms</b>	CYP2S1; Cytochrome P450 2S1; CYP11S1
<b>Observed Band</b>	56kD
<b>Cell Pathway</b>	Endoplasmic reticulum membrane ; Peripheral membrane protein . Microsome membrane ; Peripheral membrane protein .
<b>Tissue Specificity</b>	Expressed at higher levels in extrahepatic tissues including trachea, lung, stomach, small intestine, colon, kidney, breast, placenta and spleen (PubMed:11181079, PubMed:12711469). Expressed in peripheral blood leukocytes (PubMed:11181079). Constitutively expressed in skin (at protein level) (PubMed:12711469).
<b>Function</b>	catalytic activity:RH + reduced flavoprotein + O(2) = ROH + oxidized flavoprotein + H(2)O.,cofactor:Heme group.,function:Has a potential importance for extrahepatic xenobiotic metabolism.,similarity:Belongs to the cytochrome P450 family.,tissue specificity:High level of expression in trachea, lung, stomach, small intestine, and spleen.,
<b>Background</b>	This gene encodes a member of the cytochrome P450 superfamily of enzymes. The cytochrome P450 proteins are monooxygenases which catalyze many

**Nanjing BYabscience technology Co.,Ltd**



reactions involved in drug metabolism and synthesis of cholesterol, steroids and other lipids. This protein localizes to the endoplasmic reticulum. In rodents, the homologous protein has been shown to metabolize certain carcinogens; however, the specific function of the human protein has not been determined. [provided by RefSeq, Jul 2008],

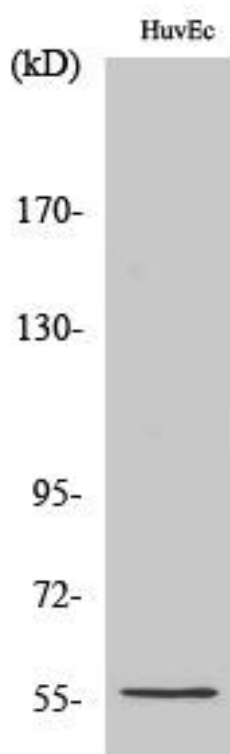
**matters needing attention**

Avoid repeated freezing and thawing!

**Usage suggestions**

This product can be used in immunological reaction related experiments. For more information, please consult technical personnel.

## Products Images



Western Blot analysis of various cells using CYP2S1 Monoclonal Antibody