



CYP2A6 Monoclonal Antibody

Catalog No	BYmab-02576
Isotype	IgG
Reactivity	Human;Rat;Mouse;;Chicken
Applications	WB
Gene Name	CYP2A6
Protein Name	Cytochrome P450 2A6
Immunogen	The antiserum was produced against synthesized peptide derived from human Cytochrome P450 2A6. AA range:1-50
Specificity	CYP2A6 Monoclonal Antibody detects endogenous levels of CYP2A6 protein.
Formulation	Liquid in PBS containing 50% glycerol, 0.5% BSA and 0.02% sodium azide.
Source	Monoclonal, Mouse,IgG
Purification	The antibody was affinity-purified from mouse antiserum by affinity-chromatography using epitope-specific immunogen.
Dilution	WB 1:500-2000
Concentration	1 mg/ml
Purity	≥90%
Storage Stability	-20°C/1 year
Synonyms	CYP2A6; CYP2A3; Cytochrome P450 2A6; 1; 4-cineole 2-exo-monooxygenase; CYP1A6; Coumarin 7-hydroxylase; Cytochrome P450 1A3; Cytochrome P450(I)
Observed Band	56kD
Cell Pathway	Endoplasmic reticulum membrane; Peripheral membrane protein. Microsome membrane; Peripheral membrane protein.
Tissue Specificity	Liver.
Function	catalytic activity:RH + reduced flavoprotein + O(2) = ROH + oxidized flavoprotein + H(2)O.,cofactor:Heme group.,function:Exhibits a high coumarin 7-hydroxylase activity. Can act in the hydroxylation of the anti-cancer drugs cyclophosphamide and ifosphamide. Competent in the metabolic activation of aflatoxin B1. Constitutes the major nicotine C-oxidase.,induction:By phenobarbital and dexamethasone.,online information:CYP2A6 alleles,online information:CYP2A6 entry,similarity:Belongs to the cytochrome P450 family.,tissue specificity:Liver.,
Background	This gene, CYP2A6, encodes a member of the cytochrome P450 superfamily of enzymes. The cytochrome P450 proteins are monooxygenases which catalyze

Nanjing BYabscience technology Co.,Ltd



many reactions involved in drug metabolism and synthesis of cholesterol, steroids and other lipids. This protein localizes to the endoplasmic reticulum and its expression is induced by phenobarbital. The enzyme is known to hydroxylate coumarin, and also metabolizes nicotine, aflatoxin B1, nitrosamines, and some pharmaceuticals. Individuals with certain allelic variants are said to have a poor metabolizer phenotype, meaning they do not efficiently metabolize coumarin or nicotine. This gene is part of a large cluster of cytochrome P450 genes from the CYP2A, CYP2B and CYP2F subfamilies on chromosome 19q. The gene was formerly referred to as CYP2A3; however, it has been renamed CYP2A6. [provided by RefSeq, Jul 2008],

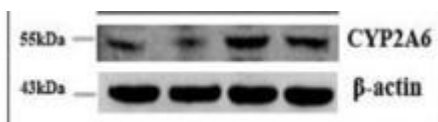
matters needing attention

Avoid repeated freezing and thawing!

Usage suggestions

This product can be used in immunological reaction related experiments. For more information, please consult technical personnel.

Products Images



Western Blot analysis of various cells using CYP2A6 Monoclonal Antibody