



# CTPS Monoclonal Antibody

<b>Catalog No</b>	BYmab-02556
<b>Isotype</b>	IgG
<b>Reactivity</b>	Human;Mouse;Rat
<b>Applications</b>	WB
<b>Gene Name</b>	CTPS1
<b>Protein Name</b>	CTP synthase 1
<b>Immunogen</b>	The antiserum was produced against synthesized peptide derived from human CTPS. AA range:60-109
<b>Specificity</b>	CTPS Monoclonal Antibody detects endogenous levels of CTPS protein.
<b>Formulation</b>	Liquid in PBS containing 50% glycerol, 0.5% BSA and 0.02% sodium azide.
<b>Source</b>	Monoclonal, Mouse,IgG
<b>Purification</b>	The antibody was affinity-purified from mouse antiserum by affinity-chromatography using epitope-specific immunogen.
<b>Dilution</b>	WB 1:500-2000
<b>Concentration</b>	1 mg/ml
<b>Purity</b>	≥90%
<b>Storage Stability</b>	-20°C/1 year
<b>Synonyms</b>	CTPS1; CTPS; CTP synthase 1; CTP synthetase 1; UTP--ammonia ligase 1
<b>Observed Band</b>	67kD
<b>Cell Pathway</b>	Cytoplasm, cytosol . Mainly cytosolic but when active detected in long filamentous structures (PubMed:25223282). Co-localizes with TNK2 in the cytosolic filaments (By similarity). .
<b>Tissue Specificity</b>	Widely expressed.
<b>Function</b>	catalytic activity:ATP + UTP + NH(3) = ADP + phosphate + CTP.,enzyme regulation:Activated by GTP and inhibited by CTP.,function:Catalyzes the ATP-dependent amination of UTP to CTP with either L-glutamine or ammonia as the source of nitrogen.,pathway:Pyrimidine metabolism; CTP biosynthesis via de novo pathway; CTP from UDP: step 2/2.,similarity:Belongs to the CTP synthase family.,similarity:Contains 1 glutamine amidotransferase type-1 domain.,
<b>Background</b>	This gene encodes an enzyme responsible for the catalytic conversion of UTP (uridine triphosphate) to CTP (cytidine triphosphate). This reaction is an important step in the biosynthesis of phospholipids and nucleic acids. Activity of this proten

**Nanjing BYabscience technology Co.,Ltd**



is important in the immune system, and loss of function of this gene has been associated with immunodeficiency. Alternative splicing results in multiple transcript variants. [provided by RefSeq, Jul 2014],

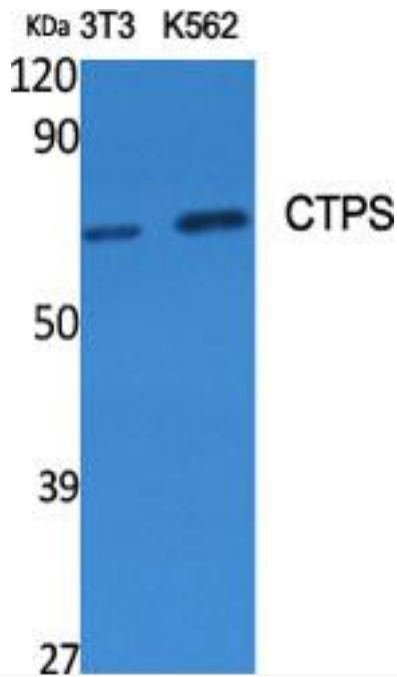
**matters needing attention**

Avoid repeated freezing and thawing!

**Usage suggestions**

This product can be used in immunological reaction related experiments. For more information, please consult technical personnel.

## Products Images



Western Blot analysis of various cells using CTPS Monoclonal Antibody