



# Calpain 11 Monoclonal Antibody

<b>Catalog No</b>	BYmab-02521
<b>Isotype</b>	IgG
<b>Reactivity</b>	Human;Rat;Mouse;
<b>Applications</b>	WB
<b>Gene Name</b>	CAPN11
<b>Protein Name</b>	Calpain-11
<b>Immunogen</b>	The antiserum was produced against synthesized peptide derived from human CAPN11. AA range:401-450
<b>Specificity</b>	Calpain 11 Monoclonal Antibody detects endogenous levels of Calpain 11 protein.
<b>Formulation</b>	Liquid in PBS containing 50% glycerol, 0.5% BSA and 0.02% sodium azide.
<b>Source</b>	Monoclonal, Mouse,IgG
<b>Purification</b>	The antibody was affinity-purified from mouse antiserum by affinity-chromatography using epitope-specific immunogen.
<b>Dilution</b>	WB 1:500-2000
<b>Concentration</b>	1 mg/ml
<b>Purity</b>	≥90%
<b>Storage Stability</b>	-20°C/1 year
<b>Synonyms</b>	CAPN11; Calpain-11; Calcium-activated neutral proteinase 11; CANP 11
<b>Observed Band</b>	81kD
<b>Cell Pathway</b>	Cytoplasmic vesicle, secretory vesicle, acrosome .
<b>Tissue Specificity</b>	Highest expression in testis.
<b>Function</b>	catalytic activity:Broad endopeptidase specificity.,function:Calcium-regulated non-lysosomal thiol-protease which catalyzes limited proteolysis of substrates involved in cytoskeletal remodeling and signal transduction.,similarity:Belongs to the peptidase C2 family.,similarity:Contains 1 calpain catalytic domain.,similarity:Contains 2 EF-hand domains.,subunit:Heterodimer of a large (catalytic) and a small (regulatory) subunit.,tissue specificity:Highest expression in testis.,
<b>Background</b>	Calpains constitute a family of intracellular calcium-dependent cysteine proteases. There are eight members in this superfamily. They consist of a variable 80 kDa subunit and an invariant 30 kDa subunit. This calpain protein appears to

**Nanjing BYabscience technology Co.,Ltd**



have protease activity and calcium-binding ability. A similar mouse protein may play a functional role in spermatogenesis and in the regulation of calcium-dependent signal transduction events during meiosis. [provided by RefSeq, Dec 2008],

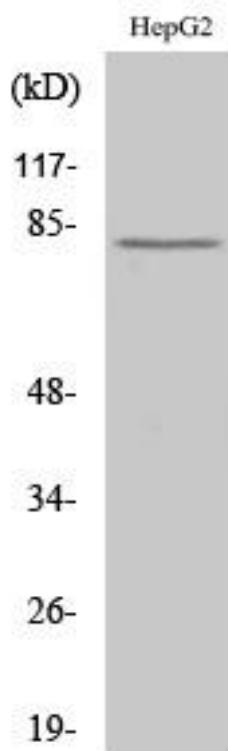
**matters needing attention**

Avoid repeated freezing and thawing!

**Usage suggestions**

This product can be used in immunological reaction related experiments. For more information, please consult technical personnel.

## Products Images



Western Blot analysis of various cells using Calpain 11 Monoclonal Antibody