



Atg4C Monoclonal Antibody

Catalog No	BYmab-02504
Isotype	IgG
Reactivity	Human;Monkey
Applications	WB
Gene Name	ATG4C
Protein Name	Cysteine protease ATG4C
Immunogen	The antiserum was produced against synthesized peptide derived from human ATG4C. AA range:21-70
Specificity	Atg4C Monoclonal Antibody detects endogenous levels of Atg4C protein.
Formulation	Liquid in PBS containing 50% glycerol, 0.5% BSA and 0.02% sodium azide.
Source	Monoclonal, Mouse,IgG
Purification	The antibody was affinity-purified from mouse antiserum by affinity-chromatography using epitope-specific immunogen.
Dilution	WB 1:500-2000
Concentration	1 mg/ml
Purity	≥90%
Storage Stability	-20°C/1 year
Synonyms	ATG4C; APG4C; AUTL1; AUTL3; Cysteine protease ATG4C; AUT-like 3 cysteine endopeptidase; Autophagin-3; Autophagy-related cysteine endopeptidase 3; Autophagy-related protein 4 homolog C
Observed Band	49kD
Cell Pathway	Cytoplasm .
Tissue Specificity	Brain,Heart,Placenta,Testis,
Function	enzyme regulation:Inhibited by N-ethylmaleimide.,function:Cysteine protease required for autophagy, which cleaves the C-terminal part of either MAP1LC3, GABARAPL2 or GABARAP, allowing the liberation of form I. A subpopulation of form I is subsequently converted to a smaller form (form II). Form II, with a revealed C-terminal glycine, is considered to be the phosphatidylethanolamine (PE)-conjugated form, and has the capacity for the binding to autophagosomes.,similarity:Belongs to the peptidase C54 family.,tissue specificity:Highly expressed in skeletal muscle, heart, liver and testis.,

Nanjing BYabscience technology Co.,Ltd



Background

Autophagy is the process by which endogenous proteins and damaged organelles are destroyed intracellularly. Autophagy is postulated to be essential for cell homeostasis and cell remodeling during differentiation, metamorphosis, non-apoptotic cell death, and aging. Reduced levels of autophagy have been described in some malignant tumors, and a role for autophagy in controlling the unregulated cell growth linked to cancer has been proposed. This gene encodes a member of the autophagin protein family. The encoded protein is also designated as a member of the C-54 family of cysteine proteases. Alternate transcriptional splice variants, encoding the same protein, have been characterized. [provided by RefSeq, Jul 2008],

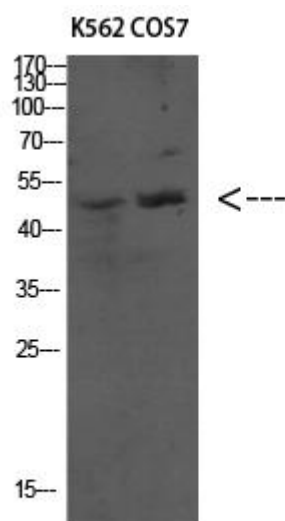
matters needing attention

Avoid repeated freezing and thawing!

Usage suggestions

This product can be used in immunological reaction related experiments. For more information, please consult technical personnel.

Products Images



Western Blot analysis of various cells using Atg4C Monoclonal Antibody