



# Atg16L2 Monoclonal Antibody

Catalog No	BYmab-02501
Isotype	IgG
Reactivity	Human;Rat;Mouse;
Applications	WB
Gene Name	ATG16L2
Protein Name	Autophagy-related protein 16-2
Immunogen	The antiserum was produced against synthesized peptide derived from human ATG16L2. AA range:241-290
Specificity	Atg16L2 Monoclonal Antibody detects endogenous levels of Atg16L2 protein.
Formulation	Liquid in PBS containing 50% glycerol, 0.5% BSA and 0.02% sodium azide.
Source	Monoclonal, Mouse,IgG
Purification	The antibody was affinity-purified from mouse antiserum by affinity-chromatography using epitope-specific immunogen.
Dilution	WB 1:500-2000
Concentration	1 mg/ml
Purity	≥90%
Storage Stability	-20°C/1 year
Synonyms	ATG16L2; WDR80; Autophagy-related protein 16-2; APG16-like 2; WD repeat-containing protein 80
Observed Band	70kD
Cell Pathway	Cytoplasm, cytosol . Localizes also to discrete punctae along the ciliary axoneme.
Tissue Specificity	Astrocyte,Blood,Eye,Spleen,Stomach,
Function	function:May play a role in autophagy.,similarity:Belongs to the WD repeat ATG16 family.,similarity:Contains 7 WD repeats.,
Background	function:May play a role in autophagy.,similarity:Belongs to the WD repeat ATG16 family.,similarity:Contains 7 WD repeats.,
matters needing attention	Avoid repeated freezing and thawing!

Nanjing BYabscience technology Co.,Ltd

网址: [www.njbybio.com](http://www.njbybio.com)

官方热线: 025-5229-8998

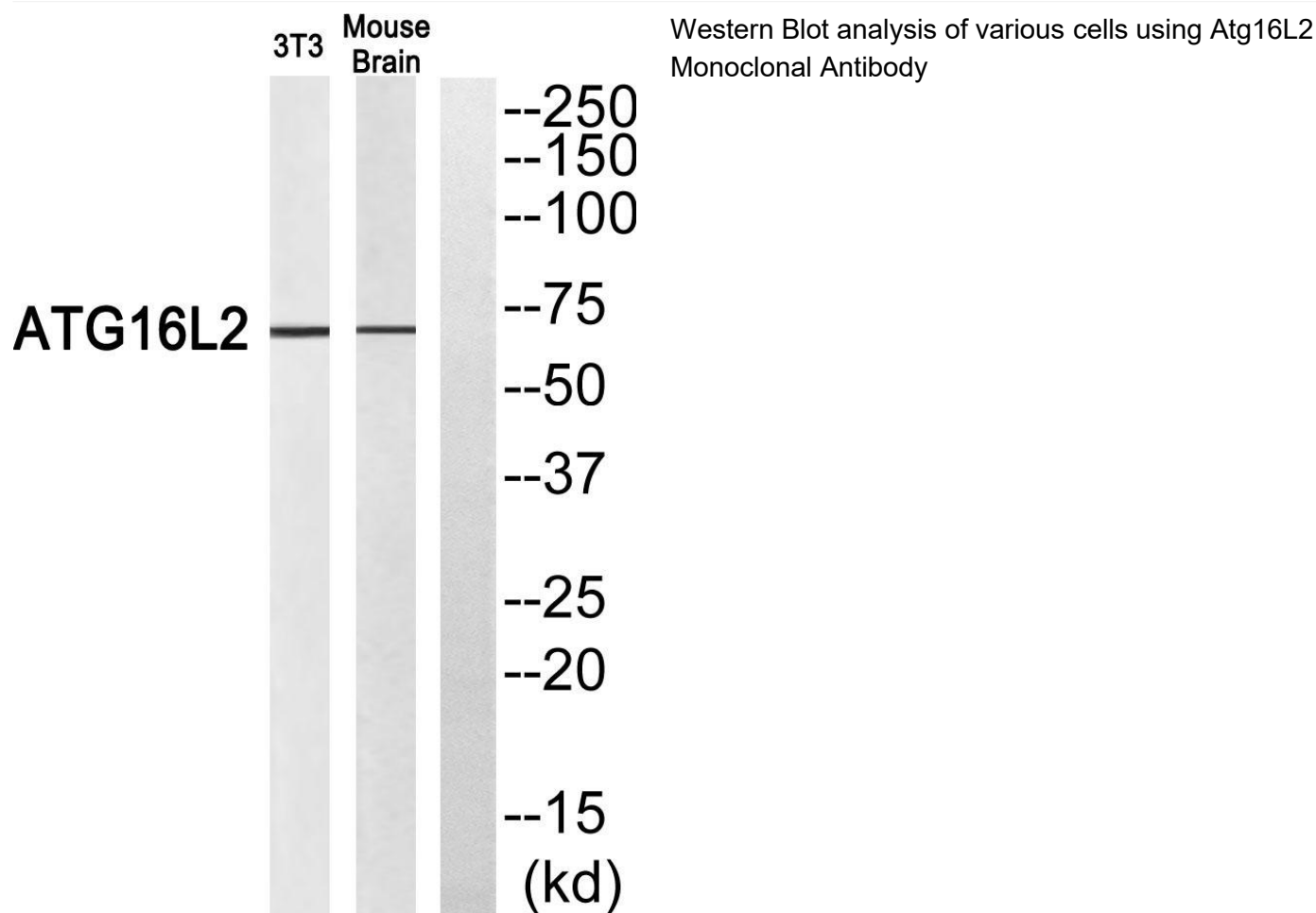
监督电话: 15950492658



### Usage suggestions

This product can be used in immunological reaction related experiments. For more information, please consult technical personnel.

## Products Images



Nanjing BYabs science technology Co.,Ltd