



# APHC Monoclonal Antibody

<b>Catalog No</b>	BYmab-02499
<b>Isotype</b>	IgG
<b>Reactivity</b>	Human;Mouse
<b>Applications</b>	WB
<b>Gene Name</b>	ACER3
<b>Protein Name</b>	Alkaline ceramidase 3
<b>Immunogen</b>	The antiserum was produced against synthesized peptide derived from human PHCA. AA range:171-220
<b>Specificity</b>	APHC Monoclonal Antibody detects endogenous levels of APHC protein.
<b>Formulation</b>	Liquid in PBS containing 50% glycerol, 0.5% BSA and 0.02% sodium azide.
<b>Source</b>	Monoclonal, Mouse,IgG
<b>Purification</b>	The antibody was affinity-purified from mouse antiserum by affinity-chromatography using epitope-specific immunogen.
<b>Dilution</b>	WB 1:500-2000
<b>Concentration</b>	1 mg/ml
<b>Purity</b>	≥90%
<b>Storage Stability</b>	-20°C/1 year
<b>Synonyms</b>	ACER3; APHC; PHCA; Alkaline ceramidase 3; AlkCDase 3; Alkaline CDase 3; Alkaline dihydroceramidase SB89; Alkaline phytoceramidase; aPHC
<b>Observed Band</b>	35kD
<b>Cell Pathway</b>	Endoplasmic reticulum membrane ; Multi-pass membrane protein . Golgi apparatus membrane ; Multi-pass membrane protein .
<b>Tissue Specificity</b>	Ubiquitously expressed. Highly expressed in placenta (PubMed:11356846). Expressed in erythrocytes (PubMed:20207939).
<b>Function</b>	enzyme regulation:Activated by Ca(2+) and inhibited by Zn(2+).,function:Hydrolyzes only phytoceramide into phytosphingosine and free fatty acid. Does not have reverse activity.,similarity:Belongs to the alkaline ceramidase family.,tissue specificity:Ubiquitously expressed. Highest expression in placenta.,
<b>Background</b>	enzyme regulation:Activated by Ca(2+) and inhibited by Zn(2+).,function:Hydrolyzes only phytoceramide into phytosphingosine and free fatty acid. Does not have reverse activity.,similarity:Belongs to the alkaline ceramidase family.,tissue specificity:Ubiquitously expressed. Highest expression

**Nanjing BYabscience technology Co.,Ltd**



in placenta.,

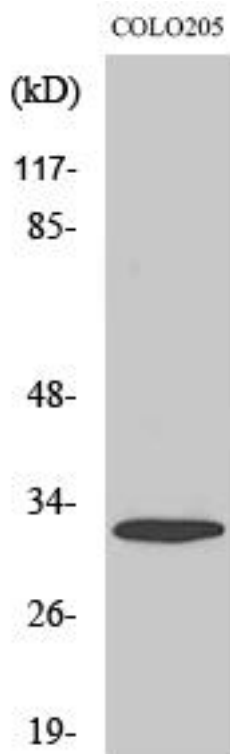
**matters needing attention**

Avoid repeated freezing and thawing!

**Usage suggestions**

This product can be used in immunological reaction related experiments. For more information, please consult technical personnel.

## Products Images



Western Blot analysis of various cells using APHC Monoclonal Antibody

Nanjing BYabs science technology Co.,Ltd

网址: [www.njbybio.com](http://www.njbybio.com)

官方热线: 025-5229-8998

监督电话: 15950492658