



AMPD2 Monoclonal Antibody

Catalog No	BYmab-02496
Isotype	IgG
Reactivity	Human;Mouse;Rat
Applications	WB
Gene Name	AMPD2
Protein Name	AMP deaminase 2
Immunogen	The antiserum was produced against synthesized peptide derived from human AMPD2. AA range:131-180
Specificity	AMPD2 Monoclonal Antibody detects endogenous levels of AMPD2 protein.
Formulation	Liquid in PBS containing 50% glycerol, 0.5% BSA and 0.02% sodium azide.
Source	Monoclonal, Mouse,IgG
Purification	The antibody was affinity-purified from mouse antiserum by affinity-chromatography using epitope-specific immunogen.
Dilution	WB 1:500-2000
Concentration	1 mg/ml
Purity	≥90%
Storage Stability	-20°C/1 year
Synonyms	AMPD2; AMP deaminase 2; AMP deaminase isoform L
Observed Band	100kD
Cell Pathway	cytosol,
Tissue Specificity	Highly expressed in cerebellum.
Function	catalytic activity:AMP + H(2)O = IMP + NH(3).,function:AMP deaminase plays a critical role in energy metabolism.,pathway:Purine metabolism; IMP biosynthesis via salvage pathway; IMP from AMP: step 1/1.,similarity:Belongs to the adenosine and AMP deaminases family.,subunit:Homotetramer.,tissue specificity:Three isoforms are present in mammals: AMP deaminase 1 is the predominant form in skeletal muscle; AMP deaminase 2 predominates in smooth muscle, non-muscle tissue, embryonic muscle and undifferentiated myoblasts; AMP deaminase 3 is found in erythrocytes.,
Background	The protein encoded by this gene is important in purine metabolism by converting AMP to IMP. The encoded protein, which acts as a homotetramer, is

Nanjing BYabscience technology Co.,Ltd



one of three AMP deaminases found in mammals. Several transcript variants encoding different isoforms have been found for this gene. [provided by RefSeq, Apr 2012],

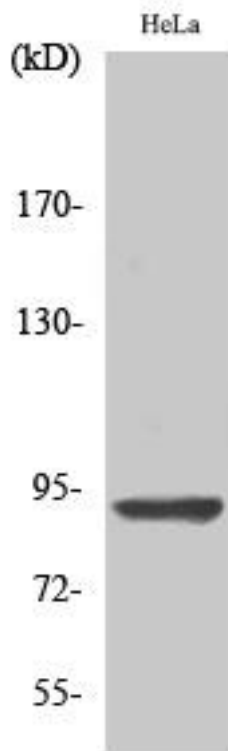
matters needing attention

Avoid repeated freezing and thawing!

Usage suggestions

This product can be used in immunological reaction related experiments. For more information, please consult technical personnel.

Products Images



Western Blot analysis of various cells using AMPD2 Monoclonal Antibody