



Aldolase A Monoclonal Antibody

Catalog No	BYmab-02492
Isotype	IgG
Reactivity	Human;Mouse;Rat
Applications	WB
Gene Name	ALDOA
Protein Name	Fructose-bisphosphate aldolase A
Immunogen	The antiserum was produced against synthesized peptide derived from human ALDOA. AA range:1-50
Specificity	Aldolase A Monoclonal Antibody detects endogenous levels of Aldolase A protein.
Formulation	Liquid in PBS containing 50% glycerol, 0.5% BSA and 0.02% sodium azide.
Source	Monoclonal, Mouse,IgG
Purification	The antibody was affinity-purified from mouse antiserum by affinity-chromatography using epitope-specific immunogen.
Dilution	WB 1:500-2000
Concentration	1 mg/ml
Purity	≥90%
Storage Stability	-20°C/1 year
Synonyms	ALDOA; ALDA; Fructose-bisphosphate aldolase A; Lung cancer antigen NY-LU-1; Muscle-type aldolase
Observed Band	39kD
Cell Pathway	Cytoplasm, myofibril, sarcomere, I band . Cytoplasm, myofibril, sarcomere, M line . In skeletal muscle, accumulates around the M line and within the I band, colocalizing with FBP2 on both sides of the Z line in the absence of Ca(2+). .
Tissue Specificity	Brain,Cajal-Retzius cell,Cervix,Colon carcinoma,Epithelium,Eye,Feta
Function	catalytic activity:D-fructose 1,6-bisphosphate = glycerone phosphate + D-glyceraldehyde 3-phosphate.,disease:Defects in ALDOA are the cause of aldolase A deficiency [MIM:611881]; also known as aldoA deficiency or red cell aldolase deficiency. Aldolase A deficiency is an autosomal recessive disorder associated with hereditary hemolytic anemia.,miscellaneous:In vertebrates, three forms of this ubiquitous glycolytic enzyme are found, aldolase A in muscle, aldolase B in liver and aldolase C in brain.,pathway:Carbohydrate degradation; glycolysis; D-glyceraldehyde 3-phosphate and glycerone phosphate from D-glucose: step 4/4.,similarity:Belongs to the class I fructose-bisphosphate

Nanjing BYabscience technology Co.,Ltd



aldolase family.,subunit:Homotetramer.,

Background

The protein encoded by this gene, Aldolase A (fructose-bisphosphate aldolase), is a glycolytic enzyme that catalyzes the reversible conversion of fructose-1,6-bisphosphate to glyceraldehyde 3-phosphate and dihydroxyacetone phosphate. Three aldolase isozymes (A, B, and C), encoded by three different genes, are differentially expressed during development. Aldolase A is found in the developing embryo and is produced in even greater amounts in adult muscle. Aldolase A expression is repressed in adult liver, kidney and intestine and similar to aldolase C levels in brain and other nervous tissue. Aldolase A deficiency has been associated with myopathy and hemolytic anemia. Alternative splicing and alternative promoter usage results in multiple transcript variants. Related pseudogenes have been identified on chromosomes 3 and 10. [provided by RefSeq, Aug 2011],

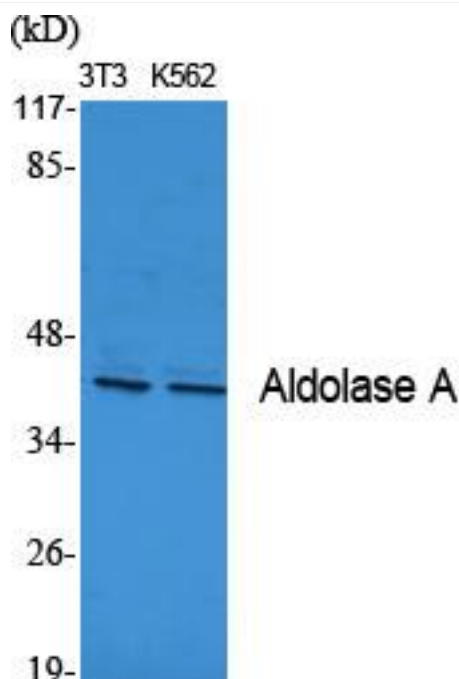
matters needing attention

Avoid repeated freezing and thawing!

Usage suggestions

This product can be used in immunological reaction related experiments. For more information, please consult technical personnel.

Products Images



Western Blot analysis of various cells using Aldolase A Monoclonal Antibody

Nanjing BYabscience technology Co.,Ltd

网址: www.njbybio.com

官方热线: 025-5229-8998

监督电话: 15950492658