



ALDH1A2 Monoclonal Antibody

Catalog No	BYmab-02489
Isotype	IgG
Reactivity	Human;Mouse;Rat
Applications	WB
Gene Name	ALDH1A2
Protein Name	Retinal dehydrogenase 2
Immunogen	The antiserum was produced against synthesized peptide derived from human ALDH1A2. AA range:412-461
Specificity	ALDH1A2 Monoclonal Antibody detects endogenous levels of ALDH1A2 protein.
Formulation	Liquid in PBS containing 50% glycerol, 0.5% BSA and 0.02% sodium azide.
Source	Monoclonal, Mouse,IgG
Purification	The antibody was affinity-purified from mouse antiserum by affinity-chromatography using epitope-specific immunogen.
Dilution	WB 1:500-2000
Concentration	1 mg/ml
Purity	≥90%
Storage Stability	-20°C/1 year
Synonyms	ALDH1A2; RALDH2; Retinal dehydrogenase 2; RALDH 2; RaLDH2; Aldehyde dehydrogenase family 1 member A2; Retinaldehyde-specific dehydrogenase type 2; RALDH(II)
Observed Band	52kD
Cell Pathway	Cytoplasm.
Tissue Specificity	Testis,Uterus,
Function	catalytic activity:Retinal + NAD(+) + H(2)O = retinoate + NADH.,function:Recognizes as substrates free retinal and cellular retinol-binding protein-bound retinal. Does metabolize octanal and decanal but does not metabolize citral, benzaldehyde, acetaldehyde and propanal efficiently.,pathway:Cofactor metabolism; retinol metabolism.,similarity:Belongs to the aldehyde dehydrogenase family.,subunit:Homotetramer.,
Background	This protein belongs to the aldehyde dehydrogenase family of proteins. The product of this gene is an enzyme that catalyzes the synthesis of retinoic acid

Nanjing BYabscience technology Co.,Ltd



(RA) from retinaldehyde. Retinoic acid, the active derivative of vitamin A (retinol), is a hormonal signaling molecule that functions in developing and adult tissues. The studies of a similar mouse gene suggest that this enzyme and the cytochrome CYP26A1, concurrently establish local embryonic retinoic acid levels which facilitate posterior organ development and prevent spina bifida. Four transcript variants encoding distinct isoforms have been identified for this gene. [provided by RefSeq, May 2011],

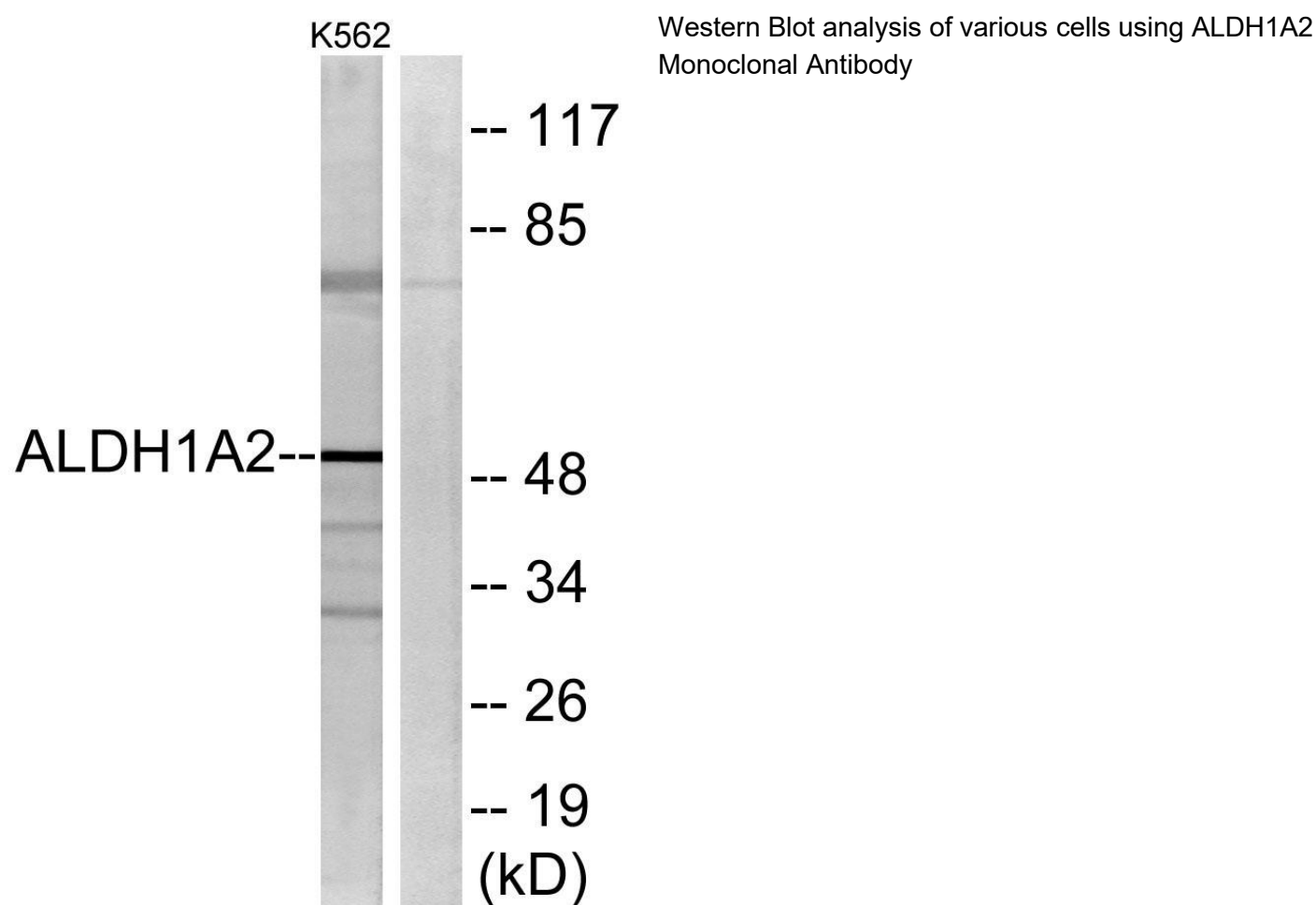
matters needing attention

Avoid repeated freezing and thawing!

Usage suggestions

This product can be used in immunological reaction related experiments. For more information, please consult technical personnel.

Products Images



Nanjing BYabscience technology Co.,Ltd