



# AKR1CL2 Monoclonal Antibody

Catalog No	BYmab-02488
Isotype	IgG
Reactivity	Human;Rat;Mouse;
Applications	WB
Gene Name	AKR1E2
Protein Name	1,5-anhydro-D-fructose reductase
Immunogen	The antiserum was produced against synthesized peptide derived from human AKR1CL2. AA range:141-190
Specificity	AKR1CL2 Monoclonal Antibody detects endogenous levels of AKR1CL2 protein.
Formulation	Liquid in PBS containing 50% glycerol, 0.5% BSA and 0.02% sodium azide.
Source	Monoclonal, Mouse,IgG
Purification	The antibody was affinity-purified from mouse antiserum by affinity-chromatography using epitope-specific immunogen.
Dilution	WB 1:500-2000
Concentration	1 mg/ml
Purity	≥90%
Storage Stability	-20°C/1 year
Synonyms	AKR1E2; AKR1CL2; AKRDC1; 1; 5-anhydro-D-fructose reductase; AF reductase; Aldo-keto reductase family 1 member C-like protein 2; Aldo-keto reductase family 1 member E2; LoopADR; Testis-specific protein; hTSP
Observed Band	37kD
Cell Pathway	Cytoplasm .
Tissue Specificity	Specifically expressed in testis (PubMed:12604216, PubMed:15118078). Expressed in testicular germ cells and testis interstitial cells (PubMed:15118078).
Function	catalytic activity:1,5-anhydro-D-glucitol + NADP(+) = 1,5-anhydro-D-fructose + NADPH.,function:Catalyzes the NADPH-dependent reduction of 1,5-anhydro-D-fructose (AF) to 1,5-anhydro-D-glucitol. Can also catalyze the reduction of various aldehydes and quinones.,similarity:Belongs to the aldo/keto reductase family.,tissue specificity:Testis-specific.,
Background	The protein encoded by this gene is a member of the aldo-keto reductase superfamily. Members in this family are characterized by their structure (evolutionarily highly conserved TIM barrel) and function (NAD(P)H-dependent

Nanjing BYabscience technology Co.,Ltd



oxido-reduction of carbonyl groups). Transcripts of this gene have been reported in specimens of human testis. Alternative splicing results in multiple transcript variants. [provided by RefSeq, Aug 2012],

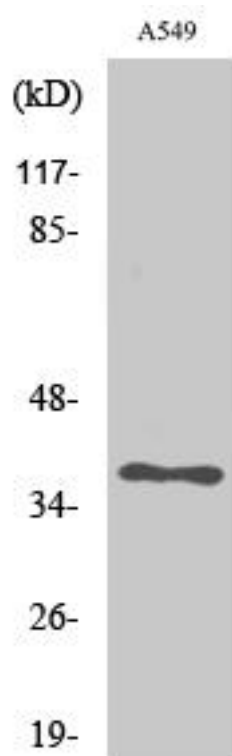
**matters needing attention**

Avoid repeated freezing and thawing!

**Usage suggestions**

This product can be used in immunological reaction related experiments. For more information, please consult technical personnel.

## Products Images



Western Blot analysis of various cells using AKR1CL2 Monoclonal Antibody