



AGXT2L2 Monoclonal Antibody

Catalog No	BYmab-02485
Isotype	IgG
Reactivity	Human;Mouse;Rat
Applications	WB
Gene Name	AGXT2L2
Protein Name	5-phosphohydroxy-L-lysine phospho-lyase
Immunogen	The antiserum was produced against synthesized peptide derived from human AGXT2L2. AA range:341-390
Specificity	AGXT2L2 Monoclonal Antibody detects endogenous levels of AGXT2L2 protein.
Formulation	Liquid in PBS containing 50% glycerol, 0.5% BSA and 0.02% sodium azide.
Source	Monoclonal, Mouse,IgG
Purification	The antibody was affinity-purified from mouse antiserum by affinity-chromatography using epitope-specific immunogen.
Dilution	WB 1:500-2000
Concentration	1 mg/ml
Purity	≥90%
Storage Stability	-20°C/1 year
Synonyms	AGXT2L2; PP9286; 5-phosphohydroxy-L-lysine phospho-lyase; Alanine--glyoxylate aminotransferase 2-like 2
Observed Band	50kD
Cell Pathway	Mitochondrion .
Tissue Specificity	Brain,Muscle,Pancreas,Stomach,
Function	cofactor:Pyridoxal phosphate .,similarity:Belongs to the class-III pyridoxal-phosphate-dependent aminotransferase family.,subunit:Homotetramer.,
Background	5-phosphohydroxy-L-lysine phospho-lyase(PHYKPL) Homo sapiens This is a nuclear gene encoding a mitochondrial enzyme that catalyzes the conversion of 5-phosphonooxy-L-lysine to ammonia, inorganic phosphate, and 2-aminoadipate semialdehyde. Mutations in this gene may cause phosphohydroxylysineuria. Alternative splicing results in multiple transcript variants. [provided by RefSeq, May 2013],

Nanjing BYabscience technology Co.,Ltd

网址: www.njbybio.com

官方热线: 025-5229-8998

监督电话: 15950492658



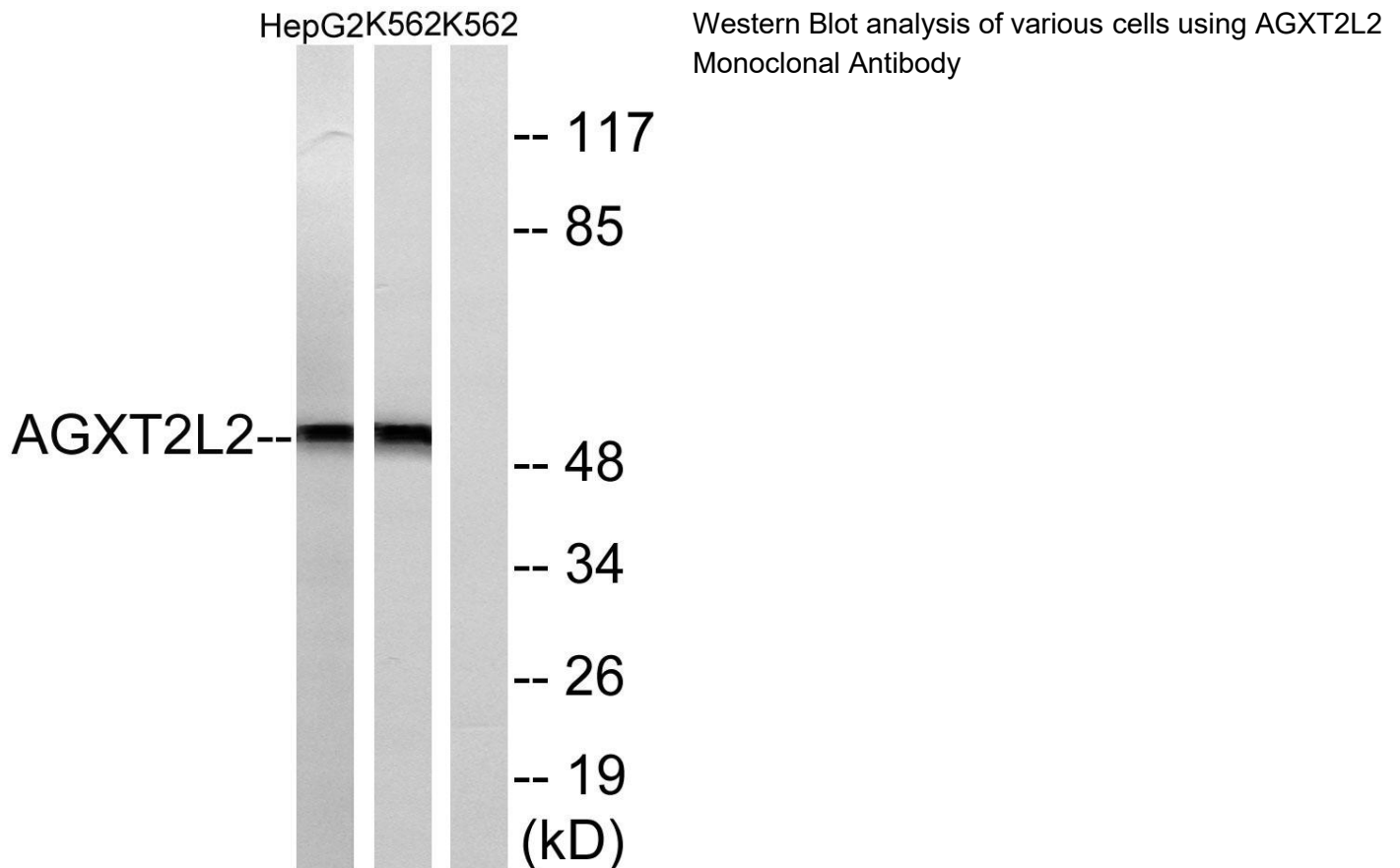
matters needing attention

Avoid repeated freezing and thawing!

Usage suggestions

This product can be used in immunological reaction related experiments. For more information, please consult technical personnel.

Products Images



Nanjing BYabs science technology Co.,Ltd

网址: www.njbybio.com

官方热线: 025-5229-8998

监督电话: 15950492658