



# ADAM32 Monoclonal Antibody

Catalog No	BYmab-02476
Isotype	IgG
Reactivity	Human;Rat;Mouse;
Applications	WB
Gene Name	ADAM32
Protein Name	Disintegrin and metalloproteinase domain-containing protein 32
Immunogen	Synthesized peptide derived from ADAM32 . at AA range: 460-540
Specificity	ADAM32 Monoclonal Antibody detects endogenous levels of ADAM32 protein.
Formulation	Liquid in PBS containing 50% glycerol, 0.5% BSA and 0.02% sodium azide.
Source	Monoclonal, Mouse,IgG
Purification	The antibody was affinity-purified from mouse antiserum by affinity-chromatography using epitope-specific immunogen.
Dilution	WB 1:500-2000
Concentration	1 mg/ml
Purity	≥90%
Storage Stability	-20°C/1 year
Synonyms	ADAM32; Disintegrin and metalloproteinase domain-containing protein 32; ADAM 32
Observed Band	87kD
Cell Pathway	Membrane ; Single-pass type I membrane protein .
Tissue Specificity	Testis specific.
Function	function:May play a role in sperm development and fertilization This is a non-catalytic metalloprotease-like protein.,similarity:Contains 1 disintegrin domain.,similarity:Contains 1 EGF-like domain.,similarity:Contains 1 peptidase M12B domain.,tissue specificity:Testis specific.,
Background	ADAM metallopeptidase domain 32(ADAM32) Homo sapiens This gene encodes a member of the disintegrin family of membrane-anchored proteins that play a role in diverse biological processes such as brain development, fertilization, tumor development and inflammation. This gene is predominantly expressed in the testis. The encoded protein undergoes proteolytic processing to generate a mature polypeptide comprised of an metalloprotease, disintegrin and epidermal

Nanjing BYabscience technology Co.,Ltd



growth factor-like domains. This gene is located in a cluster of other disintegrin and metallopeptidase family genes on chromosome 8. Alternative splicing results in multiple transcript variants encoding different isoforms. [provided by RefSeq, Sep 2015],

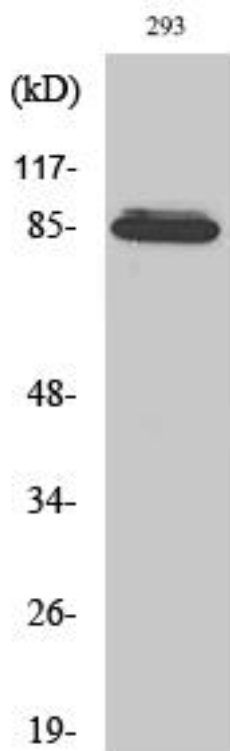
**matters needing attention**

Avoid repeated freezing and thawing!

**Usage suggestions**

This product can be used in immunological reaction related experiments. For more information, please consult technical personnel.

## Products Images



Western Blot analysis of various cells using ADAM32 Monoclonal Antibody