



# A1Up Monoclonal Antibody

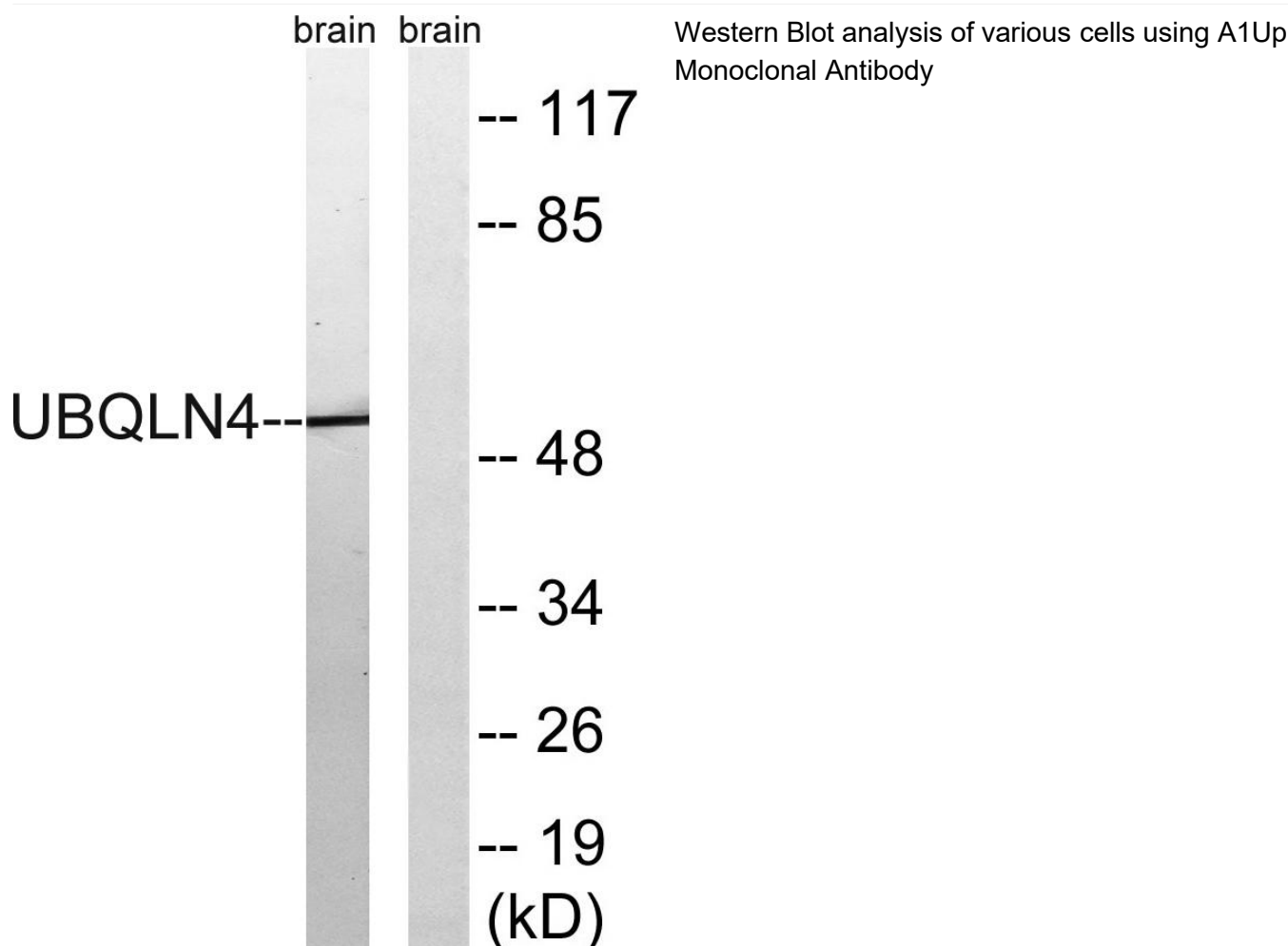
<b>Catalog No</b>	BYmab-02447
<b>Isotype</b>	IgG
<b>Reactivity</b>	Human;Mouse
<b>Applications</b>	WB
<b>Gene Name</b>	UBQLN4
<b>Protein Name</b>	Ubiquilin-4
<b>Immunogen</b>	The antiserum was produced against synthesized peptide derived from human UBQLN4. AA range:201-250
<b>Specificity</b>	A1Up Monoclonal Antibody detects endogenous levels of A1Up protein.
<b>Formulation</b>	Liquid in PBS containing 50% glycerol, 0.5% BSA and 0.02% sodium azide.
<b>Source</b>	Monoclonal, Mouse,IgG
<b>Purification</b>	The antibody was affinity-purified from mouse antiserum by affinity-chromatography using epitope-specific immunogen.
<b>Dilution</b>	WB 1:500-2000
<b>Concentration</b>	1 mg/ml
<b>Purity</b>	≥90%
<b>Storage Stability</b>	-20°C/1 year
<b>Synonyms</b>	UBQLN4; C1orf6; CIP75; UBIN; Ubiquilin-4; Ataxin-1 interacting ubiquitin-like protein; A1Up; Ataxin-1 ubiquitin-like-interacting protein A1U; Connexin43-interacting protein of 75 kDa; CIP75
<b>Observed Band</b>	54kD
<b>Cell Pathway</b>	Nucleus . Cytoplasm . Chromosome . Endoplasmic reticulum . Cytoplasm, perinuclear region . Cytoplasmic vesicle, autophagosome . Colocalizes with the proteasome, both in nucleus and cytoplasm (PubMed:15280365). Exported from the nucleus following interaction with DESI1/POST (PubMed:29666234). In response to DNA damage and phosphorylation at Ser-318 by ATM, localizes to the nucleus and is recruited to sites of DNA damage (PubMed:30612738). .
<b>Tissue Specificity</b>	Highly expressed in pancreas, kidney, skeletal muscle, heart and throughout the brain, and at lower levels in placenta, lung and liver.
<b>Function</b>	PTM:Phosphorylated upon DNA damage, probably by ATM or ATR.,similarity:Contains 1 UBA domain.,similarity:Contains 1 ubiquitin-like domain.,subcellular location:May associate with the endoplasmic reticulum.,subunit:Homodimer. Binds SCA1. Binds signal sequences of proteins

**Nanjing BYabs science technology Co.,Ltd**



	that are targeted to the endoplasmic reticulum.,tissue specificity:Highly expressed in pancreas, kidney, skeletal muscle, heart and throughout the brain, and at lower levels in placenta, lung and liver.,
<b>Background</b>	PTM:Phosphorylated upon DNA damage, probably by ATM or ATR.,similarity:Contains 1 UBA domain.,similarity:Contains 1 ubiquitin-like domain.,subcellular location:May associate with the endoplasmic reticulum.,subunit:Homodimer. Binds SCA1. Binds signal sequences of proteins that are targeted to the endoplasmic reticulum.,tissue specificity:Highly expressed in pancreas, kidney, skeletal muscle, heart and throughout the brain, and at lower levels in placenta, lung and liver.,
<b>matters needing attention</b>	Avoid repeated freezing and thawing!
<b>Usage suggestions</b>	This product can be used in immunological reaction related experiments. For more information, please consult technical personnel.

## Products Images



Nanjing BYabscience technology Co.,Ltd