



5-LO Monoclonal Antibody

Catalog No	BYmab-02446
Isotype	IgG
Reactivity	Human;Mouse;Rat
Applications	WB
Gene Name	ALOX5
Protein Name	Arachidonate 5-lipoxygenase
Immunogen	The antiserum was produced against synthesized peptide derived from human Arachidonate 5 Lipoxygenase. AA range:246-295
Specificity	5-LO Monoclonal Antibody detects endogenous levels of 5-LO protein.
Formulation	Liquid in PBS containing 50% glycerol, 0.5% BSA and 0.02% sodium azide.
Source	Monoclonal, Mouse,IgG
Purification	The antibody was affinity-purified from mouse antiserum by affinity-chromatography using epitope-specific immunogen.
Dilution	WB 1:500-2000
Concentration	1 mg/ml
Purity	≥90%
Storage Stability	-20°C/1 year
Synonyms	ALOX5; LOG5; Arachidonate 5-lipoxygenase; 5-LO; 5-lipoxygenase
Observed Band	78kD
Cell Pathway	Cytoplasm . Nucleus matrix . Nucleus membrane ; Peripheral membrane protein . Cytoplasm, perinuclear region . Cytoplasm, cytosol . Nucleus envelope . Nucleus intermembrane space . Shuttles between cytoplasm and nucleus (PubMed:19233132). Found exclusively in the nucleus, when phosphorylated on Ser-272 (PubMed:18978352). Calcium binding promotes translocation from the cytosol and the nuclear matrix to the nuclear envelope and membrane association (PubMed:19233132, PubMed:3118366, PubMed:8245774, PubMed:16275640). .
Tissue Specificity	Brain,Spleen,
Function	catalytic activity:Arachidonate + O(2) = leukotriene A(4) + H(2)O.,cofactor:Binds 1 iron ion per subunit.,cofactor:Binds 2 calcium ions per subunit.,function:Catalyzes the first step in leukotriene biosynthesis, and thereby plays a role in inflammatory processes.,pathway:Lipid metabolism; leukotriene A4 biosynthesis.,PTM:Serine phosphorylation by MAPKAPK2 is stimulated by arachidonic acid. Phosphorylation on Ser-523 by PKA has an inhibitory effect. Phosphorylation on

Nanjing BYabscience technology Co.,Ltd



Ser-272 prevents export from the nucleus.,similarity:Belongs to the lipoxygenase family.,similarity:Contains 1 lipoxygenase domain.,similarity:Contains 1 PLAT domain.,subcellular location:Shuttles between cytoplasm and nucleus. Found exclusively in the nucleus, when phosphorylated on Ser-272. Calcium binding promotes translocation from the cytosol and the nuclear matrix to the nuclear envelope and membrane association.,subun

Background

This gene encodes a member of the lipoxygenase gene family and plays a dual role in the synthesis of leukotrienes from arachidonic acid. The encoded protein, which is expressed specifically in bone marrow-derived cells, catalyzes the conversion of arachidonic acid to 5(S)-hydroperoxy-6-trans-8,11,14-cis-eicosatetraenoic acid, and further to the allylic epoxide 5(S)-trans-7,9-trans-11,14-cis-eicosatetraenoic acid (leukotriene A4). Leukotrienes are important mediators of a number of inflammatory and allergic conditions. Mutations in the promoter region of this gene lead to a diminished response to antileukotriene drugs used in the treatment of asthma and may also be associated with atherosclerosis and several cancers. Alternatively spliced transcript variants encoding different isoforms have been found for this gene. [provided by RefSeq, Jan 2012],

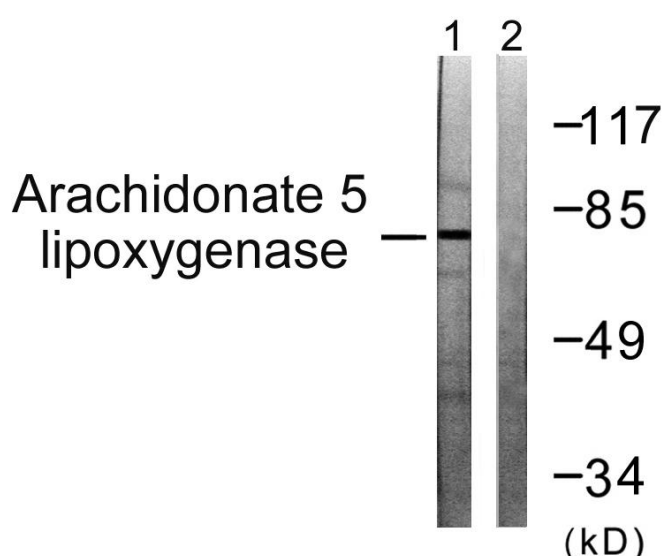
matters needing attention

Avoid repeated freezing and thawing!

Usage suggestions

This product can be used in immunological reaction related experiments. For more information, please consult technical personnel.

Products Images



Western Blot analysis of various cells using 5-LO Monoclonal Antibody

Nanjing BYabs science technology Co.,Ltd