



Cleaved-KLK11 (I54) Monoclonal Antibody

Catalog No	BYmab-02288
Isotype	IgG
Reactivity	Human;Rat;Mouse;
Applications	WB
Gene Name	KLK11
Protein Name	Kallikrein-11
Immunogen	The antiserum was produced against synthesized peptide derived from human Kallikrein-11. AA range:35-84
Specificity	Cleaved-KLK11 (I54) Monoclonal Antibody detects endogenous levels of fragment of activated KLK11 protein resulting from cleavage adjacent to I54.
Formulation	Liquid in PBS containing 50% glycerol, 0.5% BSA and 0.02% sodium azide.
Source	Monoclonal, Mouse,IgG
Purification	The antibody was affinity-purified from mouse antiserum by affinity-chromatography using epitope-specific immunogen.
Dilution	WB 1:500-2000
Concentration	1 mg/ml
Purity	≥90%
Storage Stability	-20°C/1 year
Synonyms	KLK11; PRSS20; TLSP; Kallikrein-11; hK11; Hippostasin; Serine protease 20; Trypsin-like protease
Observed Band	25kD
Cell Pathway	[Isoform 1]: Secreted.; [Isoform 2]: Golgi apparatus.
Tissue Specificity	Expressed in brain, skin and prostate. Isoform 1 is expressed preferentially in brain. Isoform 2 is expressed in prostate. Present in seminal plasma at concentrations ranging from 2 to 37 microg/mL (at protein level).
Function	function:Possible multifunctional protease. Efficiently cleaves 'bz-Phe-Arg-4-methylcoumaryl-7-amide', a kallikrein substrate, and weakly cleaves other substrates for kallikrein and trypsin. Cleaves synthetic peptides after arginine but not lysine residues.,PTM:About 40% of KLK11 is inactivated by internal cleavage after Arg-188. This proteolytic inactivation may be effected by plasminogen.,similarity:Belongs to the peptidase S1 family.,similarity:Belongs to the peptidase S1 family. Kallikrein subfamily.,similarity:Contains 1 peptidase S1 domain.,tissue specificity:Expressed in brain, skin and prostate. Isoform 1 is expressed preferentially in brain; isoform 2 in prostate. Present in seminal plasma

Nanjing BYabscience technology Co.,Ltd



at concentrations ranging from 2 to 37 microg/mL (at protein level),.

Background

Kallikreins are a subgroup of serine proteases having diverse physiological functions. Growing evidence suggests that many kallikreins are implicated in carcinogenesis and some have potential as novel cancer and other disease biomarkers. This gene is one of the fifteen kallikrein subfamily members located in a cluster on chromosome 19. Alternate splicing of this gene results in multiple transcript variants encoding distinct isoforms which are differentially expressed.[provided by RefSeq, Nov 2009],

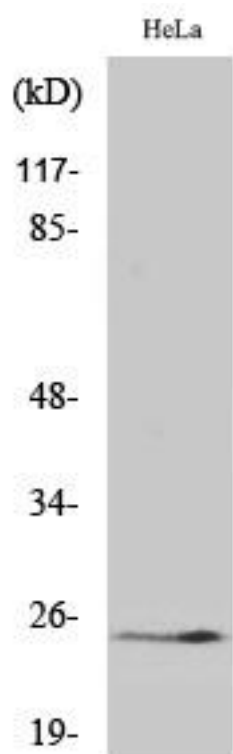
matters needing attention

Avoid repeated freezing and thawing!

Usage suggestions

This product can be used in immunological reaction related experiments. For more information, please consult technical personnel.

Products Images



Western Blot analysis of various cells using Cleaved-KLK11 (I54) Monoclonal Antibody

Nanjing BYabs science technology Co.,Ltd

网址: www.njbybio.com

官方热线: 025-5229-8998

监督电话: 15950492658