



SNRPN Monoclonal Antibody

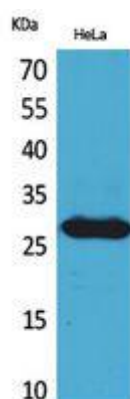
Catalog No	BYmab-02247
Isotype	IgG
Reactivity	Human;Mouse;Rat
Applications	WB
Gene Name	SNRPN
Protein Name	Small nuclear ribonucleoprotein-associated protein N
Immunogen	The antiserum was produced against synthesized peptide derived from the Internal region of human SNRPN. AA range:21-70
Specificity	SNRPN Monoclonal Antibody detects endogenous levels of SNRPN protein.
Formulation	Liquid in PBS containing 50% glycerol, 0.5% BSA and 0.02% sodium azide.
Source	Monoclonal, Mouse,IgG
Purification	The antibody was affinity-purified from mouse antiserum by affinity-chromatography using epitope-specific immunogen.
Dilution	WB 1:500-2000
Concentration	1 mg/ml
Purity	≥90%
Storage Stability	-20°C/1 year
Synonyms	SNRPN; HCERN3; SMN; Small nuclear ribonucleoprotein-associated protein N; snRNP-N; Sm protein D; Sm-D; Sm protein N; Sm-N; SmN; Tissue-specific-splicing protein
Observed Band	26kD
Cell Pathway	Nucleus.
Tissue Specificity	Expressed in brain and lymphoblasts.
Function	disease:Patients with the autoimmune disease systemic lupus erythematosus (SLE) have autoantibodies directed against some of the individual snRNP polypeptides. The most common autoantigen is called Sm. N bears Sm epitopes.,function:May be involved in tissue-specific alternative RNA processing events.,miscellaneous:Encoded on a bicistronic transcript that encode for two proteins, SNRPN and SNURF.,miscellaneous:Encoded on a bicistronic transcript that encode for two proteins, SNRPN and SNURF. In addition to the primary 1.6-kb bicistronic SNURF-SNRPN transcript, SNURF-only transcript is also detected.,similarity:Belongs to the snRNP SmB/SmN family.,similarity:Belongs to

Nanjing BYabscience technology Co.,Ltd



	the SNURF family.,subunit:Interacts with TDRD3.,tissue specificity:Expressed in brain and lymphoblasts.,tissue specificity:Expressed in heart, skeletal muscle and lymphoblasts (at protein level). Expressed in brain, pancreas
Background	The protein encoded by this gene is one polypeptide of a small nuclear ribonucleoprotein complex and belongs to the snRNP SMB/SMN family. The protein plays a role in pre-mRNA processing, possibly tissue-specific alternative splicing events. Although individual snRNPs are believed to recognize specific nucleic acid sequences through RNA-RNA base pairing, the specific role of this family member is unknown. The protein arises from a bicistronic transcript that also encodes a protein identified as the SNRPN upstream reading frame (SNURF). Multiple transcription initiation sites have been identified and extensive alternative splicing occurs in the 5' untranslated region. Additional splice variants have been described but sequences for the complete transcripts have not been determined. The 5' UTR of this gene has been identified as an imprinting center. Alternative splicing
matters needing attention	Avoid repeated freezing and thawing!
Usage suggestions	This product can be used in immunological reaction related experiments. For more information, please consult technical personnel.

Products Images



Western Blot analysis of various cells using SNRPN Monoclonal Antibody