



FOXP3 Monoclonal Antibody

| | |
|--------------------|---|
| Catalog No | BYmab-02246 |
| Isotype | IgG |
| Reactivity | Human;Mouse;Rat;Pig |
| Applications | WB |
| Gene Name | FOXP3 |
| Protein Name | Forkhead box protein P3 |
| Immunogen | The antiserum was produced against synthesized peptide derived from the C-terminal region of human FOXP3. AA range:381-430 |
| Specificity | FOXP3 Monoclonal Antibody detects endogenous levels of FOXP3 protein. |
| Formulation | Liquid in PBS containing 50% glycerol, 0.5% BSA and 0.02% sodium azide. |
| Source | Monoclonal, Mouse,IgG |
| Purification | The antibody was affinity-purified from mouse antiserum by affinity-chromatography using epitope-specific immunogen. |
| Dilution | WB 1:500-2000 |
| Concentration | 1 mg/ml |
| Purity | ≥90% |
| Storage Stability | -20°C/1 year |
| Synonyms | FOXP3; IPEX; JM2; Forkhead box protein P3; Scurfin |
| Observed Band | 47kD |
| Cell Pathway | Nucleus . Cytoplasm . Predominantly expressed in the cytoplasm in activated conventional T-cells whereas predominantly expressed in the nucleus in regulatory T-cells (Treg). The 41 kDa form derived by proteolytic processing is found exclusively in the chromatin fraction of activated Treg cells (By similarity). . |
| Tissue Specificity | |
| Function | disease:Defects in FOXP3 are the cause of immunodeficiency polyendocrinopathy, enteropathy, X-linked syndrome (IPEX) [MIM:304790]; also known as X-linked autoimmunity-immunodeficiency syndrome. IPEX is characterized by neonatal onset insulin-dependent diabetes mellitus, infections, secretory diarrhea, thrombocytopenia, anemia and eczema. It is usually lethal in infancy.,function:Probable transcription factor. Plays a critical role in the control of immune response.,online information:FOXP3 entry,online information:FOXP3 mutation db,similarity:Contains 1 C2H2-type zinc finger.,similarity:Contains 1 fork-head DNA-binding domain., |

Nanjing BYabscience technology Co.,Ltd



Background

The protein encoded by this gene is a member of the forkhead/winged-helix family of transcriptional regulators. Defects in this gene are the cause of immunodeficiency polyendocrinopathy, enteropathy, X-linked syndrome (IPEX), also known as X-linked autoimmunity-immunodeficiency syndrome. Alternatively spliced transcript variants encoding different isoforms have been identified. [provided by RefSeq, Jul 2008],

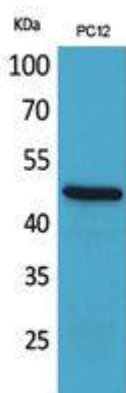
matters needing attention

Avoid repeated freezing and thawing!

Usage suggestions

This product can be used in immunological reaction related experiments. For more information, please consult technical personnel.

Products Images



Western Blot analysis of various cells using FOXP3 Monoclonal Antibody