



# E2F-4 Monoclonal Antibody

Catalog No	BYmab-02235
Isotype	IgG
Reactivity	Human;Mouse;Rat
Applications	WB
Gene Name	E2F4
Protein Name	Transcription factor E2F4
Immunogen	The antiserum was produced against synthesized peptide derived from human E2F4 around the non-acetylation site of Lys96. AA range:61-110
Specificity	E2F-4 Monoclonal Antibody detects endogenous levels of E2F-4 protein.
Formulation	Liquid in PBS containing 50% glycerol, 0.5% BSA and 0.02% sodium azide.
Source	Monoclonal, Mouse,IgG
Purification	The antibody was affinity-purified from mouse antiserum by affinity-chromatography using epitope-specific immunogen.
Dilution	WB 1:500-2000
Concentration	1 mg/ml
Purity	≥90%
Storage Stability	-20°C/1 year
Synonyms	E2F4; Transcription factor E2F4; E2F-4
Observed Band	43kD
Cell Pathway	Nucleus.
Tissue Specificity	Found in all tissue examined including heart, brain, placenta, lung, liver, skeletal muscle, kidney and pancreas.
Function	developmental stage:Present in the growth-arrested state, its abundance does not change significantly as cells move into and through the cell cycle.;function:Transcription activator that binds DNA cooperatively with DP proteins through the E2 recognition site, 5'-TTTC[CG]CGC-3' found in the promoter region of a number of genes whose products are involved in cell cycle regulation or in DNA replication. The DRTF1/E2F complex functions in the control of cell-cycle progression from G1 to S phase. E2F-4 binds with high affinity to RBL1 and RBL2. In some instances, can also bind RB protein.;polymorphism:The poly-Ser region of E2F4 is polymorphic and the number of Ser varies in the population (from 8 to 17). The variation might be associated with tumorigenesis.;PTM:Differentially phosphorylated in vivo.;similarity:Belongs to the

Nanjing BYabscience technology Co.,Ltd



## E2F/DP family.,subunit:Component of the DRTF1/E2F transcription fa

### Background

The protein encoded by this gene is a member of the E2F family of transcription factors. The E2F family plays a crucial role in the control of cell cycle and action of tumor suppressor proteins and is also a target of the transforming proteins of small DNA tumor viruses. The E2F proteins contain several evolutionally conserved domains found in most members of the family. These domains include a DNA binding domain, a dimerization domain which determines interaction with the differentiation regulated transcription factor proteins (DP), a transactivation domain enriched in acidic amino acids, and a tumor suppressor protein association domain which is embedded within the transactivation domain. This protein binds to all three of the tumor suppressor proteins pRB, p107 and p130, but with higher affinity to the last two. It plays an important role in the suppression of proliferation-associated ge

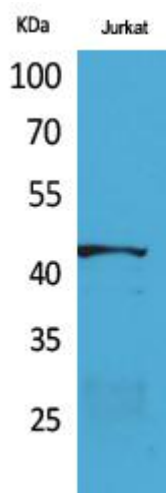
### matters needing attention

Avoid repeated freezing and thawing!

### Usage suggestions

This product can be used in immunological reaction related experiments. For more information, please consult technical personnel.

## Products Images



Western Blot analysis of various cells using E2F-4 Monoclonal Antibody

**Nanjing BYabscience technology Co.,Ltd**

网址: [www.njbybio.com](http://www.njbybio.com)

官方热线: 025-5229-8998

监督电话: 15950492658