



CAF-1 p150 Monoclonal Antibody

Catalog No	BYmab-02210
Isotype	IgG
Reactivity	Human;Mouse
Applications	WB
Gene Name	CHAF1A
Protein Name	Chromatin assembly factor 1 subunit A
Immunogen	Synthesized peptide derived from CAF-1 p150 . at AA range: 300-380
Specificity	CAF-1 p150 Monoclonal Antibody detects endogenous levels of CAF-1 p150 protein.
Formulation	Liquid in PBS containing 50% glycerol, 0.5% BSA and 0.02% sodium azide.
Source	Monoclonal, Mouse,IgG
Purification	The antibody was affinity-purified from mouse antiserum by affinity-chromatography using epitope-specific immunogen.
Dilution	WB 1:500-2000
Concentration	1 mg/ml
Purity	≥90%
Storage Stability	-20°C/1 year
Synonyms	CHAF1A; CAF; CAF1P150; Chromatin assembly factor 1 subunit A; CAF-1 subunit A; Chromatin assembly factor I p150 subunit; CAF-I 150 kDa subunit; CAF-I p150; hp150
Observed Band	150kD
Cell Pathway	Nucleus . DNA replication foci.
Tissue Specificity	Brain,Cervix adenocarcinoma,Epithelium,Ovary,
Function	alternative products:Experimental confirmation may be lacking for some isoforms.developmental stage:Active complex is found in G1, S and G2 phases.,domain:Contains one Pro-Xaa-Val-Xaa-Leu (PxVxL) motif, which is required for interaction with chromoshadow domains. This motif requires additional residues -7, -6, +4 and +5 of the central Val which contact the chromoshadow domain.,function:Core component of the CAF-1 complex, a complex thought to mediate chromatin assembly in DNA replication and DNA repair. Assembles histone octamers onto replicating DNA in vitro. CAF-1 performs the first step of the nucleosome assembly process, bringing newly synthesized

Nanjing BYabscience technology Co.,Ltd



histones H3 and H4 to replicating DNA; histones H2A/H2B can bind to this chromatin precursor subsequent to DNA replication to complete the histone octamer. CHAF1A binds to histones H3 and H4. It may play a role in heterochromatin maintenanc

Background

Chromatin assembly factor I (CAF1) is a nuclear complex consisting of p50, p60 (CHAF1B; MIM 601245), and p150 (CHAF1A) subunits that assembles histone octamers onto replicating DNA in vitro (Kaufman et al., 1995 [PubMed 7600578]).[supplied by OMIM, Mar 2008],

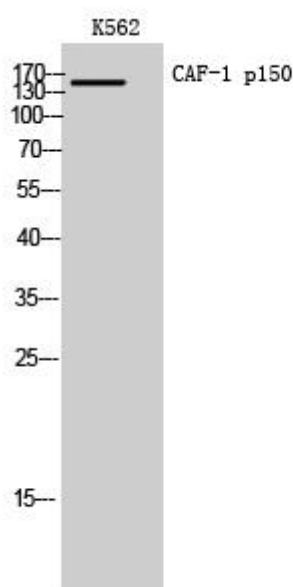
matters needing attention

Avoid repeated freezing and thawing!

Usage suggestions

This product can be used in immunological reaction related experiments. For more information, please consult technical personnel.

Products Images



Western Blot analysis of various cells using CAF-1 p150 Monoclonal Antibody