



ZNF785 Monoclonal Antibody

| | |
|--------------------|--|
| Catalog No | BYmab-02205 |
| Isotype | IgG |
| Reactivity | Human;Rat;Mouse; |
| Applications | WB |
| Gene Name | ZNF785 |
| Protein Name | Zinc finger protein 785 |
| Immunogen | The antiserum was produced against synthesized peptide derived from human ZNF785. AA range:91-140 |
| Specificity | ZNF785 Monoclonal Antibody detects endogenous levels of ZNF785 protein. |
| Formulation | Liquid in PBS containing 50% glycerol, 0.5% BSA and 0.02% sodium azide. |
| Source | Monoclonal, Mouse,IgG |
| Purification | The antibody was affinity-purified from mouse antiserum by affinity-chromatography using epitope-specific immunogen. |
| Dilution | WB 1:500-2000 |
| Concentration | 1 mg/ml |
| Purity | ≥90% |
| Storage Stability | -20°C/1 year |
| Synonyms | ZNF785; Zinc finger protein 785 |
| Observed Band | 87kD |
| Cell Pathway | Nucleus . |
| Tissue Specificity | B-cell,Brain,Peripheral blood monocyte,Testis, |
| Function | function:May be involved in transcriptional regulation.,sequence caution:The predicted gene has been split into 2 genes: ZNF688 and ZNF785.,similarity:Belongs to the krueppel C2H2-type zinc-finger protein family.,similarity:Contains 1 KRAB domain.,similarity:Contains 2 C2H2-type zinc fingers.,similarity:Contains 7 C2H2-type zinc fingers., |
| Background | function:May be involved in transcriptional regulation.,sequence caution:The predicted gene has been split into 2 genes: ZNF688 and ZNF785.,similarity:Belongs to the krueppel C2H2-type zinc-finger protein family.,similarity:Contains 1 KRAB domain.,similarity:Contains 2 C2H2-type zinc fingers.,similarity:Contains 7 C2H2-type zinc fingers., |

Nanjing BYabscience technology Co.,Ltd



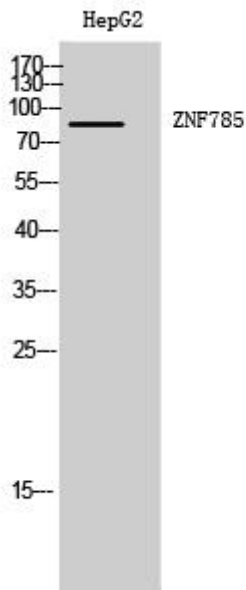
matters needing attention

Avoid repeated freezing and thawing!

Usage suggestions

This product can be used in immunological reaction related experiments. For more information, please consult technical personnel.

Products Images



Western Blot analysis of various cells using ZNF785 Monoclonal Antibody