



ZNF682 Monoclonal Antibody

Catalog No	BYmab-02199
Isotype	IgG
Reactivity	Human;Rat;Mouse;
Applications	WB
Gene Name	ZNF682
Protein Name	Zinc finger protein 682
Immunogen	The antiserum was produced against synthesized peptide derived from human ZNF682. AA range:21-70
Specificity	ZNF682 Monoclonal Antibody detects endogenous levels of ZNF682 protein.
Formulation	Liquid in PBS containing 50% glycerol, 0.5% BSA and 0.02% sodium azide.
Source	Monoclonal, Mouse,IgG
Purification	The antibody was affinity-purified from mouse antiserum by affinity-chromatography using epitope-specific immunogen.
Dilution	WB 1:500-2000
Concentration	1 mg/ml
Purity	≥90%
Storage Stability	-20°C/1 year
Synonyms	ZNF682; Zinc finger protein 682
Observed Band	58kD
Cell Pathway	Nucleus .
Tissue Specificity	Brain,Placenta,Trachea,
Function	function:May be involved in transcriptional regulation.,similarity:Belongs to the krueppel C2H2-type zinc-finger protein family.,similarity:Contains 1 KRAB domain.,similarity:Contains 11 C2H2-type zinc fingers.,
Background	function:May be involved in transcriptional regulation.,similarity:Belongs to the krueppel C2H2-type zinc-finger protein family.,similarity:Contains 1 KRAB domain.,similarity:Contains 11 C2H2-type zinc fingers.,
matters needing attention	Avoid repeated freezing and thawing!

Nanjing BYabscience technology Co.,Ltd

网址: www.njbybio.com

官方热线: 025-5229-8998

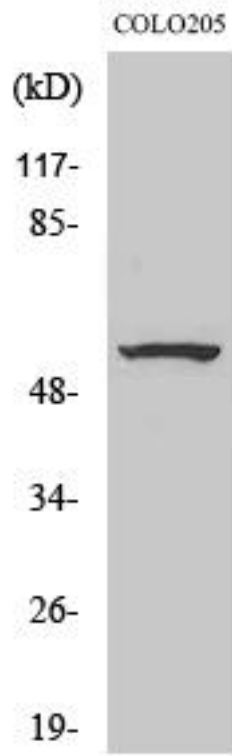
监督电话: 15950492658



Usage suggestions

This product can be used in immunological reaction related experiments. For more information, please consult technical personnel.

Products Images



Western Blot analysis of various cells using ZNF682 Monoclonal Antibody

Nanjing BYabs science technology Co.,Ltd

网址: www.njbybio.com

官方热线: 025-5229-8998

监督电话: 15950492658