



ZFP106 Monoclonal Antibody

Catalog No	BYmab-02169
Isotype	IgG
Reactivity	Human;Mouse;Monkey
Applications	WB
Gene Name	ZFP106
Protein Name	Zinc finger protein 106 homolog
Immunogen	The antiserum was produced against synthesized peptide derived from human ZFP106. AA range:1833-1882
Specificity	ZFP106 Monoclonal Antibody detects endogenous levels of ZFP106 protein.
Formulation	Liquid in PBS containing 50% glycerol, 0.5% BSA and 0.02% sodium azide.
Source	Monoclonal, Mouse,IgG
Purification	The antibody was affinity-purified from mouse antiserum by affinity-chromatography using epitope-specific immunogen.
Dilution	WB 1:500-2000
Concentration	1 mg/ml
Purity	≥90%
Storage Stability	-20°C/1 year
Synonyms	ZFP106; SH3BP3; ZNF474; Zinc finger protein 106 homolog; Zfp-106; Zinc finger protein 474
Observed Band	209kD
Cell Pathway	Nucleus, nucleolus . Nucleus speckle . Colocalizes with RBM39 in nuclear speckles. Inhibition of RNA synthesis, or overexpression of KNOP1, induces translocation from nuclear speckles to the nucleolus. .
Tissue Specificity	Epithelium,Human skeletal muscle,Prostate,Skeletal muscle,Testis,
Function	PTM:Phosphorylated upon DNA damage, probably by ATM or ATR.,sequence caution:Contaminating sequence. Potential poly-A sequence.,similarity:Contains 2 C2H2-type zinc fingers.,similarity:Contains 6 WD repeats.,subunit:Interacts with TSG118.,
Background	PTM:Phosphorylated upon DNA damage, probably by ATM or ATR.,sequence caution:Contaminating sequence. Potential poly-A sequence.,similarity:Contains 2 C2H2-type zinc fingers.,similarity:Contains 6 WD repeats.,subunit:Interacts with TSG118.,

Nanjing BYabscience technology Co.,Ltd



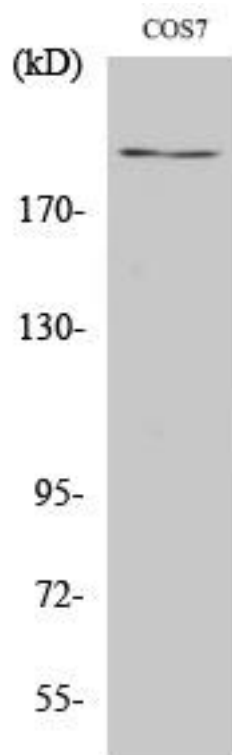
matters needing attention

Avoid repeated freezing and thawing!

Usage suggestions

This product can be used in immunological reaction related experiments. For more information, please consult technical personnel.

Products Images



Western Blot analysis of various cells using ZFP106 Monoclonal Antibody