



ZC3H11A Monoclonal Antibody

Catalog No	BYmab-02164
Isotype	IgG
Reactivity	Human;Monkey
Applications	WB
Gene Name	ZC3H11A
Protein Name	Zinc finger CCCH domain-containing protein 11A
Immunogen	The antiserum was produced against synthesized peptide derived from human ZC3H11A. AA range:291-340
Specificity	ZC3H11A Monoclonal Antibody detects endogenous levels of ZC3H11A protein.
Formulation	Liquid in PBS containing 50% glycerol, 0.5% BSA and 0.02% sodium azide.
Source	Monoclonal, Mouse,IgG
Purification	The antibody was affinity-purified from mouse antiserum by affinity-chromatography using epitope-specific immunogen.
Dilution	WB 1:500-2000
Concentration	1 mg/ml
Purity	≥90%
Storage Stability	-20°C/1 year
Synonyms	ZC3H11A; KIAA0663; ZC3HDC11A; Zinc finger CCCH domain-containing protein 11A
Observed Band	110kD
Cell Pathway	Nucleus .
Tissue Specificity	Brain,Epithelium,Fetal kidney,Kidney,Placenta,Retina,
Function	PTM:Phosphorylated upon DNA damage, probably by ATM or ATR.,sequence caution:Contaminating sequence. Potential poly-A sequence.,similarity:Contains 3 C3H1-type zinc fingers.,
Background	PTM:Phosphorylated upon DNA damage, probably by ATM or ATR.,sequence caution:Contaminating sequence. Potential poly-A sequence.,similarity:Contains 3 C3H1-type zinc fingers.,
matters needing attention	Avoid repeated freezing and thawing!

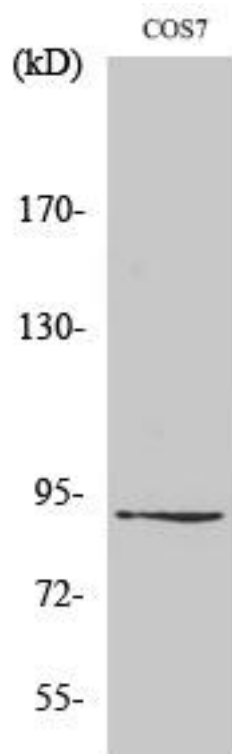
Nanjing BYabs science technology Co.,Ltd



Usage suggestions

This product can be used in immunological reaction related experiments. For more information, please consult technical personnel.

Products Images



Western Blot analysis of various cells using ZC3H11A Monoclonal Antibody