



# UBCE7IP4 Monoclonal Antibody

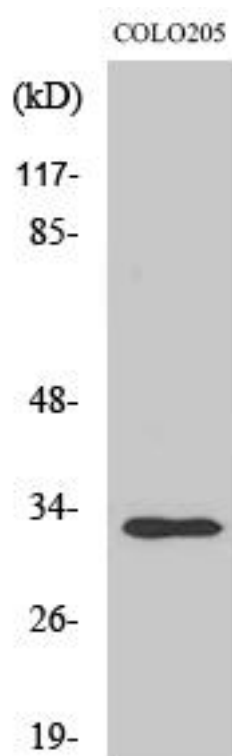
Catalog No	BYmab-02146
Isotype	IgG
Reactivity	Human;Mouse
Applications	WB
Gene Name	RNF144A
Protein Name	Probable E3 ubiquitin-protein ligase RNF144A
Immunogen	The antiserum was produced against synthesized peptide derived from human RNF144A. AA range:151-200
Specificity	UBCE7IP4 Monoclonal Antibody detects endogenous levels of UBCE7IP4 protein.
Formulation	Liquid in PBS containing 50% glycerol, 0.5% BSA and 0.02% sodium azide.
Source	Monoclonal, Mouse,IgG
Purification	The antibody was affinity-purified from mouse antiserum by affinity-chromatography using epitope-specific immunogen.
Dilution	WB 1:500-2000
Concentration	1 mg/ml
Purity	≥90%
Storage Stability	-20°C/1 year
Synonyms	RNF144A; KIAA0161; RNF144; UBCE7IP4; Probable E3 ubiquitin-protein ligase RNF144A; RING finger protein 144A; UbcM4-interacting protein 4; Ubiquitin-conjugating enzyme 7-interacting protein 4
Observed Band	30kD
Cell Pathway	Cell membrane ; Single-pass membrane protein . Cytoplasmic vesicle membrane .
Tissue Specificity	Bone marrow,Ovary,
Function	caution:Lacks the His residue in the RING-type domain 2 that is one of the conserved features of the family.,function:E3 ubiquitin-protein ligase which accepts ubiquitin from E2 ubiquitin-conjugating enzymes UBE2L3 and UBE2L6 in the form of a thioester and then directly transfers the ubiquitin to targeted substrates.,pathway:Protein modification; protein ubiquitination.,similarity:Belongs to the RBR family. RNF144 subfamily.,similarity:Contains 1 IBR-type zinc finger.,similarity:Contains 2 RING-type zinc fingers.,subunit:Interacts with UBE2L3.,

Nanjing BYabscience technology Co.,Ltd



<b>Background</b>	The protein encoded by this protein contains a RING finger, a motif known to be involved in protein-DNA and protein-protein interactions. The mouse counterpart of this protein has been shown to interact with Ube2I3/UbcM4, which is an ubiquitin-conjugating enzyme involved in embryonic development. [provided by RefSeq, Jul 2008],
<b>matters needing attention</b>	Avoid repeated freezing and thawing!
<b>Usage suggestions</b>	This product can be used in immunological reaction related experiments. For more information, please consult technical personnel.

## Products Images



Western Blot analysis of various cells using UBCE7IP4 Monoclonal Antibody