



TCF-3 Monoclonal Antibody

Catalog No	BYmab-02089
Isotype	IgG
Reactivity	Human;Mouse
Applications	WB
Gene Name	TCF7L1
Protein Name	Transcription factor 7-like 1
Immunogen	The antiserum was produced against synthesized peptide derived from human TCF7L1. AA range:321-370
Specificity	TCF-3 Monoclonal Antibody detects endogenous levels of TCF-3 protein.
Formulation	Liquid in PBS containing 50% glycerol, 0.5% BSA and 0.02% sodium azide.
Source	Monoclonal, Mouse,IgG
Purification	The antibody was affinity-purified from mouse antiserum by affinity-chromatography using epitope-specific immunogen.
Dilution	WB 1:500-2000
Concentration	1 mg/ml
Purity	≥90%
Storage Stability	-20°C/1 year
Synonyms	TCF7L1; TCF3; Transcription factor 7-like 1; HMG box transcription factor 3; TCF-3
Observed Band	63kD
Cell Pathway	Nucleus.
Tissue Specificity	Detected in hair follicles and skin keratinocytes, and at lower levels in stomach epithelium.
Function	domain:The putative Groucho interaction domain between the N-terminal CTNNB1 binding domain and the HMG-box is necessary for repression of the transactivation mediated by TCF7L1 and CTNNB1.,function:Participates in the Wnt signaling pathway. Binds to DNA and acts as a repressor in the absence of CTNNB1, and as an activator in its presence. Necessary for the terminal differentiation of epidermal cells, the formation of keratohyalin granules and the development of the barrier function of the epidermis (By similarity). Down-regulates NQO1, leading to increased mitomycin c resistance.,similarity:Belongs to the TCF/LEF family.,similarity:Contains 1 HMG box DNA-binding domain.,subunit:Binds the armadillo repeat of CTNNB1 and

Nanjing BYabscience technology Co.,Ltd



forms a stable complex.,tissue specificity:Detected in hair follicles and skin keratinocytes, and at lower levels in stomach epithelium.,

Background

This gene encodes a member of the T cell factor/lymphoid enhancer factor family of transcription factors. These transcription factors are activated by beta catenin, mediate the Wnt signaling pathway and are antagonized by the transforming growth factor beta signaling pathway. The encoded protein contains a high mobility group-box DNA binding domain and participates in the regulation of cell cycle genes and cellular senescence. [provided by RefSeq, Nov 2010],

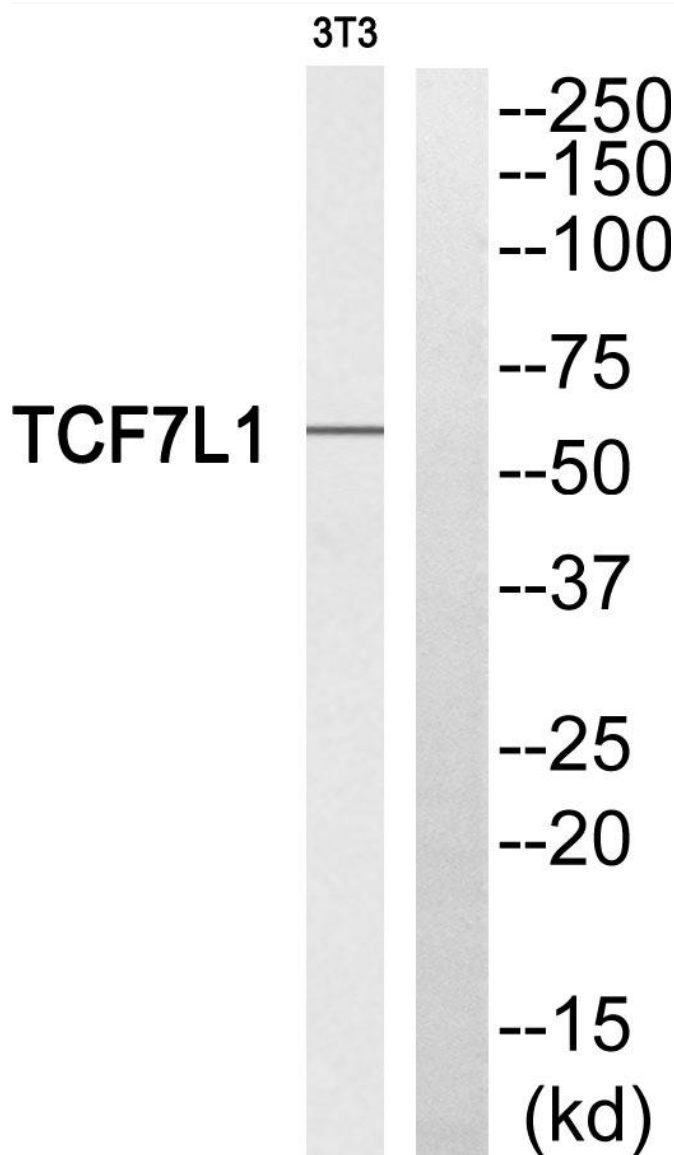
matters needing attention

Avoid repeated freezing and thawing!

Usage suggestions

This product can be used in immunological reaction related experiments. For more information, please consult technical personnel.

Products Images



Western Blot analysis of various cells using TCF-3 Monoclonal Antibody

Nanjing BYabscience technology Co.,Ltd