



# SSBP2 Monoclonal Antibody

Catalog No	BYmab-02050
Isotype	IgG
Reactivity	Human;Mouse
Applications	WB
Gene Name	SSBP2
Protein Name	Single-stranded DNA-binding protein 2
Immunogen	The antiserum was produced against synthesized peptide derived from human SSBP2. AA range:10-59
Specificity	SSBP2 Monoclonal Antibody detects endogenous levels of SSBP2 protein.
Formulation	Liquid in PBS containing 50% glycerol, 0.5% BSA and 0.02% sodium azide.
Source	Monoclonal, Mouse,IgG
Purification	The antibody was affinity-purified from mouse antiserum by affinity-chromatography using epitope-specific immunogen.
Dilution	WB 1:500-2000
Concentration	1 mg/ml
Purity	≥90%
Storage Stability	-20°C/1 year
Synonyms	SSBP2; SSDP2; Single-stranded DNA-binding protein 2; Sequence-specific single-stranded-DNA-binding protein 2
Observed Band	38kD
Cell Pathway	Nucleus .
Tissue Specificity	Ubiquitous.
Function	similarity:Contains 1 LisH domain.,tissue specificity:Ubiquitous.,
Background	This gene encodes a subunit of a protein complex that interacts with single-stranded DNA and is involved in the DNA damage response and maintenance of genome stability. The encoded protein may also play a role in telomere repair. A variant of this gene may be associated with survival in human glioblastoma patients. [provided by RefSeq, Sep 2016],
matters needing attention	Avoid repeated freezing and thawing!

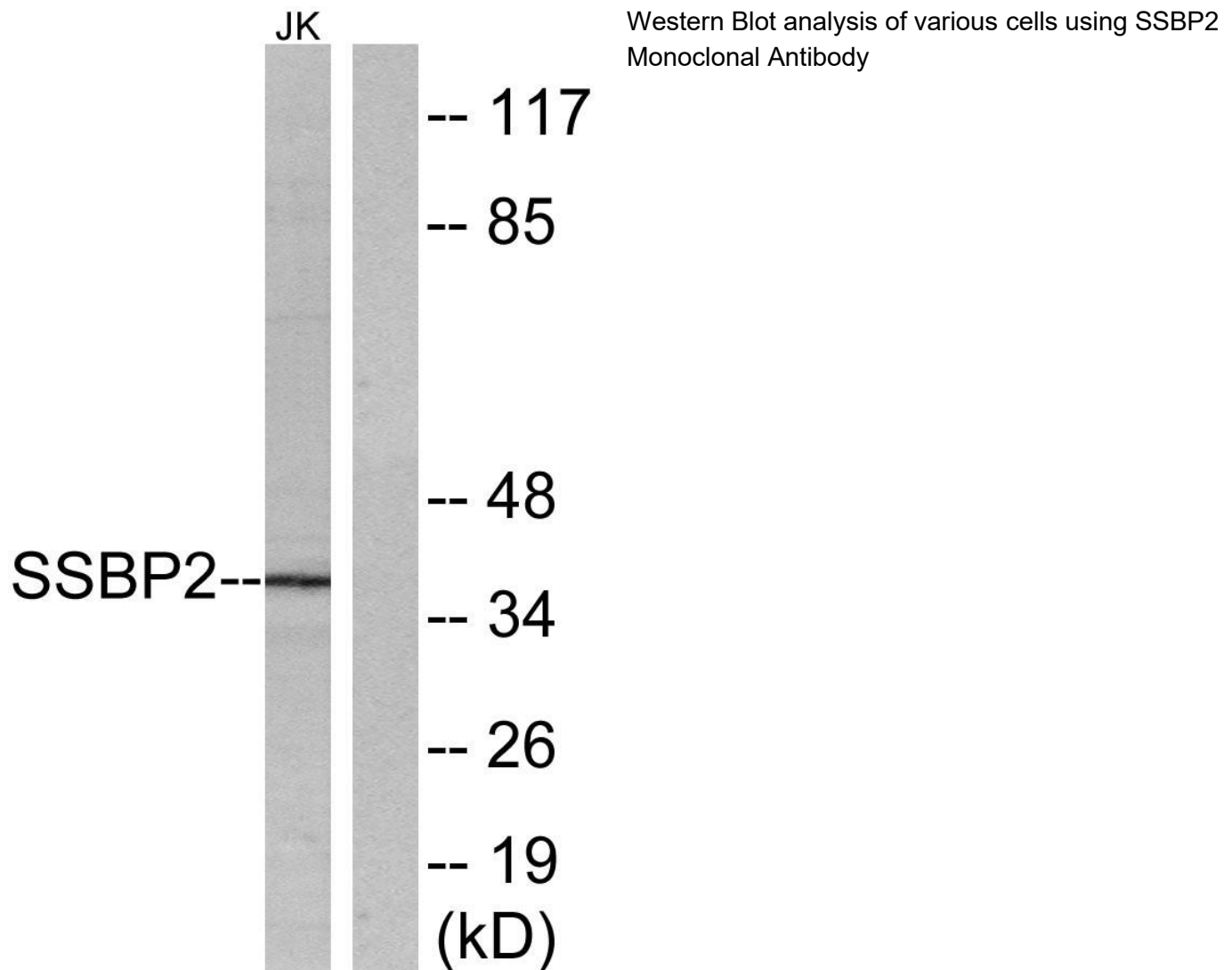
Nanjing BYabscience technology Co.,Ltd



### Usage suggestions

This product can be used in immunological reaction related experiments. For more information, please consult technical personnel.

### Products Images



Nanjing BYabs science technology Co.,Ltd

网址: [www.njbybio.com](http://www.njbybio.com)

官方热线: 025-5229-8998

监督电话: 15950492658