



# SSBP1 Monoclonal Antibody

<b>Catalog No</b>	BYmab-02049
<b>Isotype</b>	IgG
<b>Reactivity</b>	Human;Mouse;Rat;Cow
<b>Applications</b>	WB
<b>Gene Name</b>	SSBP1
<b>Protein Name</b>	Single-stranded DNA-binding protein mitochondrial
<b>Immunogen</b>	The antiserum was produced against synthesized peptide derived from human MtSSB. AA range:99-148
<b>Specificity</b>	SSBP1 Monoclonal Antibody detects endogenous levels of SSBP1 protein.
<b>Formulation</b>	Liquid in PBS containing 50% glycerol, 0.5% BSA and 0.02% sodium azide.
<b>Source</b>	Monoclonal, Mouse,IgG
<b>Purification</b>	The antibody was affinity-purified from mouse antiserum by affinity-chromatography using epitope-specific immunogen.
<b>Dilution</b>	WB 1:500-2000
<b>Concentration</b>	1 mg/ml
<b>Purity</b>	≥90%
<b>Storage Stability</b>	-20°C/1 year
<b>Synonyms</b>	SSBP1; SSBP; Single-stranded DNA-binding protein; mitochondrial; Mt-SSB; MtSSB; PWP1-interacting protein 17
<b>Observed Band</b>	17kD
<b>Cell Pathway</b>	Mitochondrion . Mitochondrion matrix, mitochondrion nucleoid .
<b>Tissue Specificity</b>	Expressed in retinal ganglion cells, photoreceptors, pigmented epithelium and fibroblasts (at protein level).
<b>Function</b>	function:This protein binds preferentially and cooperatively to ss-DNA. Probably involved in mitochondrial DNA replication.,PTM:Phosphorylated upon DNA damage, probably by ATM or ATR.,similarity:Contains 1 SSB domain.,subunit:Homotetramer.,
<b>Background</b>	SSBP1 is a housekeeping gene involved in mitochondrial biogenesis (Tiranti et al., 1995 [PubMed 7789991]). It is also a subunit of a single-stranded DNA (ssDNA)-binding complex involved in the maintenance of genome stability (Huang et al., 2009) [PubMed 19683501].[supplied by OMIM, Feb 2010],

**Nanjing BYabscience technology Co.,Ltd**

网址: [www.njbybio.com](http://www.njbybio.com)

官方热线: 025-5229-8998

监督电话: 15950492658



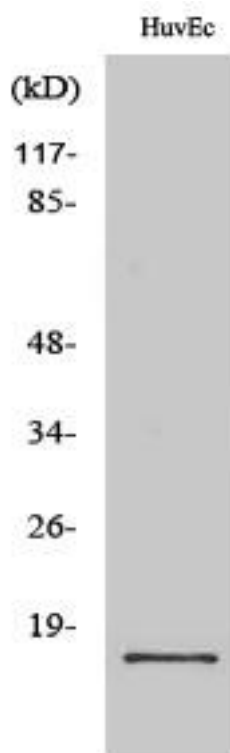
**matters needing attention**

Avoid repeated freezing and thawing!

**Usage suggestions**

This product can be used in immunological reaction related experiments. For more information, please consult technical personnel.

## Products Images



Western Blot analysis of various cells using SSBP1 Monoclonal Antibody