



# SRp46 Monoclonal Antibody

<b>Catalog No</b>	BYmab-02045
<b>Isotype</b>	IgG
<b>Reactivity</b>	Human;Rat;Mouse;
<b>Applications</b>	WB
<b>Gene Name</b>	SRSF8
<b>Protein Name</b>	Serine/arginine-rich splicing factor 8
<b>Immunogen</b>	The antiserum was produced against synthesized peptide derived from human SFRS2B. AA range:31-80
<b>Specificity</b>	SRp46 Monoclonal Antibody detects endogenous levels of SRp46 protein.
<b>Formulation</b>	Liquid in PBS containing 50% glycerol, 0.5% BSA and 0.02% sodium azide.
<b>Source</b>	Monoclonal, Mouse,IgG
<b>Purification</b>	The antibody was affinity-purified from mouse antiserum by affinity-chromatography using epitope-specific immunogen.
<b>Dilution</b>	WB 1:500-2000
<b>Concentration</b>	1 mg/ml
<b>Purity</b>	≥90%
<b>Storage Stability</b>	-20°C/1 year
<b>Synonyms</b>	SRSF8; SFRS2B; SRP46; Serine/arginine-rich splicing factor 8; Pre-mRNA-splicing factor SRP46; Splicing factor SRp46; Splicing factor; arginine/serine-rich 2B
<b>Observed Band</b>	32kD
<b>Cell Pathway</b>	Nucleus .
<b>Tissue Specificity</b>	Strongly expressed in pancreas, spleen and prostate. Weakly expressed in lung, liver and thymus.
<b>Function</b>	function:Invovlved in pre-mRNA alternative splicing.,PTM:Phosphorylated.,similarity:Belongs to the splicing factor SR family.,similarity:Contains 1 RRM (RNA recognition motif) domain.,tissue specificity:Strongly expressed in pancreas, spleen and prostate. Weakly expressed in lung, liver and thymus.,
<b>Background</b>	This gene encodes a member of a family of proteins containing a ribonucleoprotein (RNP)-type RNA binding motif and a carboxyl-terminal arginine-serine-rich (RS) domain. The encoded protein functions as a pre-mRNA

**Nanjing BYabscience technology Co.,Ltd**



splicing factor. There is a pseudogene for this gene on chromosome 7. Alternative splicing results in multiple transcript variants. [provided by RefSeq, Jun 2013],

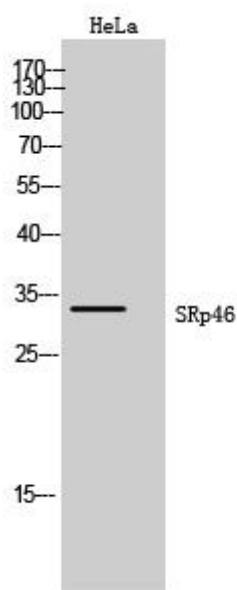
**matters needing attention**

Avoid repeated freezing and thawing!

**Usage suggestions**

This product can be used in immunological reaction related experiments. For more information, please consult technical personnel.

## Products Images



Western Blot analysis of various cells using SRp46 Monoclonal Antibody

**Nanjing BYabscience technology Co.,Ltd**

网址: [www.njbybio.com](http://www.njbybio.com)

官方热线: 025-5229-8998

监督电话: 15950492658