



# SRE-ZBP Monoclonal Antibody

Catalog No	BYmab-02041
Isotype	IgG
Reactivity	Human;Rat;Mouse;
Applications	WB
Gene Name	ZNF187
Protein Name	Zinc finger protein 187
Immunogen	The antiserum was produced against synthesized peptide derived from human ZNF187. AA range:51-100
Specificity	SRE-ZBP Monoclonal Antibody detects endogenous levels of SRE-ZBP protein.
Formulation	Liquid in PBS containing 50% glycerol, 0.5% BSA and 0.02% sodium azide.
Source	Monoclonal, Mouse,IgG
Purification	The antibody was affinity-purified from mouse antiserum by affinity-chromatography using epitope-specific immunogen.
Dilution	WB 1:500-2000
Concentration	1 mg/ml
Purity	≥90%
Storage Stability	-20°C/1 year
Synonyms	ZNF187; ZSCAN26; Zinc finger protein 187; Protein SRE-ZBP; Zinc finger and SCAN domain-containing protein 26
Observed Band	55kD
Cell Pathway	Nucleus .
Tissue Specificity	Cervix,Kidney,
Function	function:May be involved in transcriptional regulation.,induction:By serum stimulation.,similarity:Contains 1 SCAN box domain.,similarity:Contains 8 C2H2-type zinc fingers.,
Background	function:May be involved in transcriptional regulation.,induction:By serum stimulation.,similarity:Contains 1 SCAN box domain.,similarity:Contains 8 C2H2-type zinc fingers.,
matters needing attention	Avoid repeated freezing and thawing!

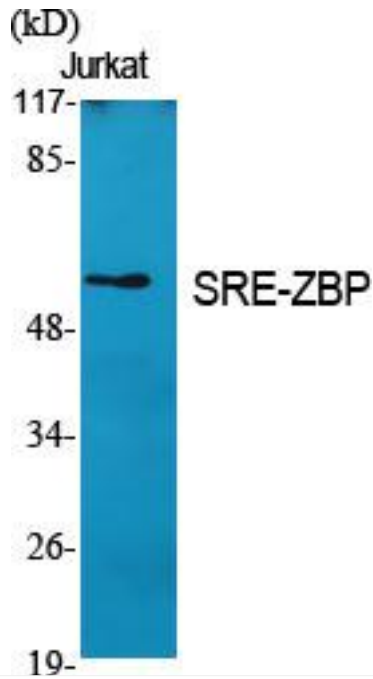
Nanjing BYabscience technology Co.,Ltd



### Usage suggestions

This product can be used in immunological reaction related experiments. For more information, please consult technical personnel.

## Products Images



Western Blot analysis of various cells using SRE-ZBP Monoclonal Antibody

Nanjing BYabs science technology Co.,Ltd

网址: [www.njbybio.com](http://www.njbybio.com)

官方热线: 025-5229-8998

监督电话: 15950492658