



SMYD2 Monoclonal Antibody

Catalog No	BYmab-02024
Isotype	IgG
Reactivity	Human;Mouse;Rat
Applications	WB
Gene Name	SMYD2
Protein Name	N-lysine methyltransferase SMYD2
Immunogen	The antiserum was produced against synthesized peptide derived from human SMYD2. AA range:99-148
Specificity	SMYD2 Monoclonal Antibody detects endogenous levels of SMYD2 protein.
Formulation	Liquid in PBS containing 50% glycerol, 0.5% BSA and 0.02% sodium azide.
Source	Monoclonal, Mouse,IgG
Purification	The antibody was affinity-purified from mouse antiserum by affinity-chromatography using epitope-specific immunogen.
Dilution	WB 1:500-2000
Concentration	1 mg/ml
Purity	≥90%
Storage Stability	-20°C/1 year
Synonyms	SMYD2; KMT3C; N-lysine methyltransferase SMYD2; HSKM-B; Histone methyltransferase SMYD2; Lysine N-methyltransferase 3C; SET and MYND domain-containing protein 2
Observed Band	50kD
Cell Pathway	Cytoplasm, cytosol . Nucleus .
Tissue Specificity	Brain,Colon,Liver cancer,Testis,
Function	similarity:Contains 1 MYND-type zinc finger.,similarity:Contains 1 SET domain.,
Background	SET and MYND domain containing 2(SMYD2) Homo sapiens SET domain-containing proteins, such as SMYD2, catalyze lysine methylation (Brown et al., 2006 [PubMed 16805913]).[supplied by OMIM, Nov 2008],
matters needing attention	Avoid repeated freezing and thawing!

Nanjing BYabscience technology Co.,Ltd

网址: www.njbybio.com

官方热线: 025-5229-8998

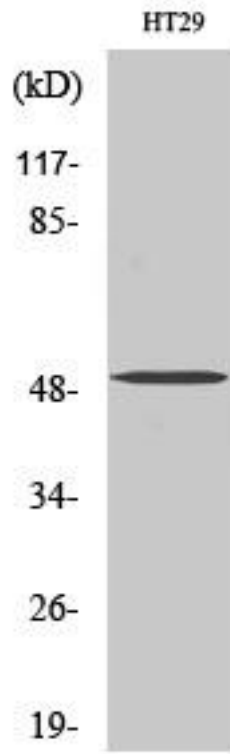
监督电话: 15950492658



Usage suggestions

This product can be used in immunological reaction related experiments. For more information, please consult technical personnel.

Products Images



Western Blot analysis of various cells using SMYD2 Monoclonal Antibody

Nanjing BYabs science technology Co.,Ltd

网址: www.njbybio.com

官方热线: 025-5229-8998

监督电话: 15950492658