



# Smad6 Monoclonal Antibody

<b>Catalog No</b>	BYmab-02019
<b>Isotype</b>	IgG
<b>Reactivity</b>	Human;Mouse
<b>Applications</b>	WB
<b>Gene Name</b>	SMAD6
<b>Protein Name</b>	Mothers against decapentaplegic homolog 6
<b>Immunogen</b>	The antiserum was produced against synthesized peptide derived from human Smad6. AA range:323-372
<b>Specificity</b>	Smad6 Monoclonal Antibody detects endogenous levels of Smad6 protein.
<b>Formulation</b>	Liquid in PBS containing 50% glycerol, 0.5% BSA and 0.02% sodium azide.
<b>Source</b>	Monoclonal, Mouse,IgG
<b>Purification</b>	The antibody was affinity-purified from mouse antiserum by affinity-chromatography using epitope-specific immunogen.
<b>Dilution</b>	WB 1:500-2000
<b>Concentration</b>	1 mg/ml
<b>Purity</b>	≥90%
<b>Storage Stability</b>	-20°C/1 year
<b>Synonyms</b>	SMAD6; MADH6; Mothers against decapentaplegic homolog 6; MAD homolog 6; Mothers against DPP homolog 6; SMAD family member 6; SMAD 6; Smad6; hSMAD6
<b>Observed Band</b>	62kD
<b>Cell Pathway</b>	Nucleus .
<b>Tissue Specificity</b>	Ubiquitous in various organs, with higher levels in lung. Isoform B is up-regulated in diseased heart tissue.
<b>Function</b>	function:Antagonist of signaling by TGF-beta (transforming growth factor) type 1 receptor superfamily members; has been shown to inhibit selectively BMP (bone morphogenetic proteins) signaling by competing with the co-SMAD SMAD4 for receptor-activated SMAD1. SMAD6 is an inhibitory SMAD (I-SMAD) or antagonistic SMAD. Binds to regulatory elements in target promoter regions.,PTM:Phosphorylated by BMP type 1 receptor kinase and by PRKX.,similarity:Belongs to the dwarfin/SMAD family.,similarity:Contains 1 MH1 (MAD homology 1) domain.,similarity:Contains 1 MH2 (MAD homology 2) domain.,subunit:Interacts with NEDD4L (By similarity). Interacts with RNF111 and

**Nanjing BYabscience technology Co.,Ltd**



AXIN1. Interacts with TGF-beta type I receptor superfamily members, SMAD1, HOXC8 and HOXC9. Interacts with STAMPB and PRKX. ,tissue specificity:Ubiquitous in various organs, with higher levels in lung. Isoform B is up-regulated in diseased he

#### Background

The protein encoded by this gene belongs to the SMAD family of proteins, which are related to Drosophila &apos;mothers against decapentaplegic&apos; (Mad) and C. elegans Sma. SMAD proteins are signal transducers and transcriptional modulators that mediate multiple signaling pathways. This protein functions in the negative regulation of BMP and TGF-beta/activin-signalling. Multiple transcript variants have been found for this gene.[provided by RefSeq, Sep 2014],

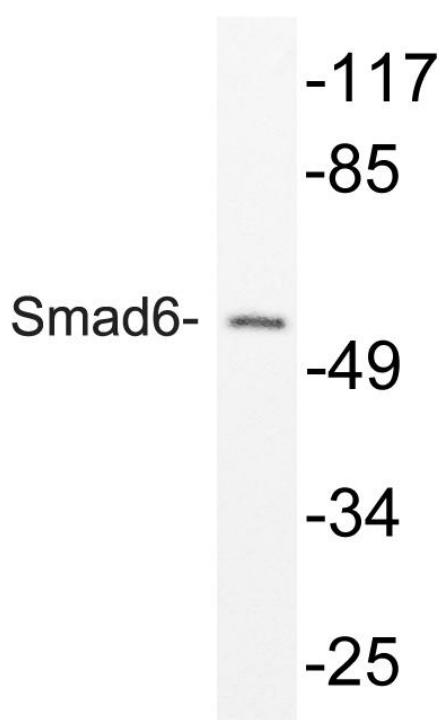
#### matters needing attention

Avoid repeated freezing and thawing!

#### Usage suggestions

This product can be used in immunological reaction related experiments. For more information, please consult technical personnel.

### Products Images



Western Blot analysis of various cells using Smad6 Monoclonal Antibody