



SAP 14 Monoclonal Antibody

Catalog No	BYmab-02002
Isotype	IgG
Reactivity	Human;Mouse
Applications	WB
Gene Name	SF3B14
Protein Name	Pre-mRNA branch site protein p14
Immunogen	The antiserum was produced against synthesized peptide derived from human SF3B14. AA range:76-125
Specificity	SAP 14 Monoclonal Antibody detects endogenous levels of SAP 14 protein.
Formulation	Liquid in PBS containing 50% glycerol, 0.5% BSA and 0.02% sodium azide.
Source	Monoclonal, Mouse,IgG
Purification	The antibody was affinity-purified from mouse antiserum by affinity-chromatography using epitope-specific immunogen.
Dilution	WB 1:500-2000
Concentration	1 mg/ml
Purity	≥90%
Storage Stability	-20°C/1 year
Synonyms	SF3B14; CGI-110; HSPC175; HT006; Pre-mRNA branch site protein p14; SF3b 14 kDa subunit
Observed Band	14kD
Cell Pathway	Nucleus .
Tissue Specificity	Hypothalamus,Testis,Umbilical cord blood,Uterus,
Function	function:Necessary for the splicing of pre-mRNA. Directly contacts the pre-mRNA branch site adenosine for the first catalytic step of splicing. Enters the spliceosome and associates with the pre-mRNA branch site as part of the 17S U2 or, in the case of the minor spliceosome, as part of the 18S U11/U12 snRNP complex, and thus may facilitate the interaction of these snRNP with the branch sites of U2 and U12 respectively.,similarity:Contains 1 RRM (RNA recognition motif) domain.,subunit:Interacts with SF3B1/SF3b155 in the region of amino acids 255-424. Interacts to a lesser extent with SF3b130.,

Nanjing BYabscience technology Co.,Ltd



Background

This gene encodes a 14 kDa protein subunit of the splicing factor 3b complex. Splicing factor 3b associates with both the U2 and U11/U12 small nuclear ribonucleoprotein complexes (U2 snRNP) of spliceosomes. This 14 kDa protein interacts directly with subunit 1 of the splicing factor 3b complex. This 14 kDa protein also interacts directly with the adenosine that carries out the first transesterification step of splicing at the pre-mRNA branch site. [provided by RefSeq, Jul 2008],

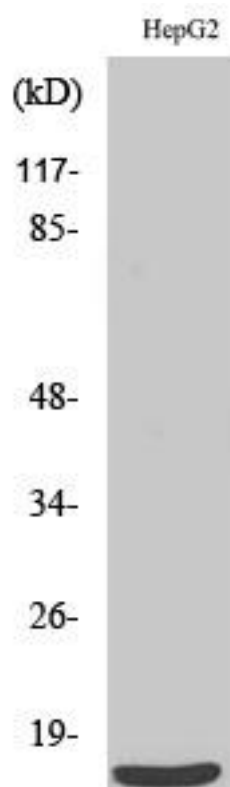
matters needing attention

Avoid repeated freezing and thawing!

Usage suggestions

This product can be used in immunological reaction related experiments. For more information, please consult technical personnel.

Products Images



Western Blot analysis of various cells using SAP 14 Monoclonal Antibody