



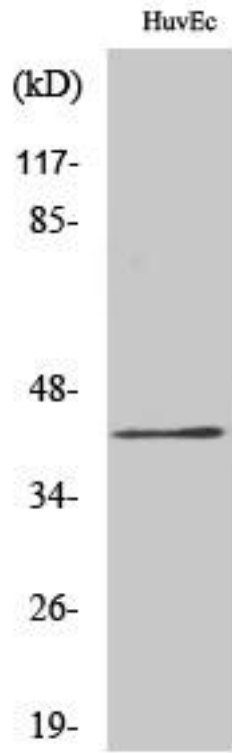
# RRS1 Monoclonal Antibody

Catalog No	BYmab-01998
Isotype	IgG
Reactivity	Human;Mouse;Rat
Applications	WB
Gene Name	RRS1
Protein Name	Ribosome biogenesis regulatory protein homolog
Immunogen	The antiserum was produced against synthesized peptide derived from human RRS1. AA range:254-303
Specificity	RRS1 Monoclonal Antibody detects endogenous levels of RRS1 protein.
Formulation	Liquid in PBS containing 50% glycerol, 0.5% BSA and 0.02% sodium azide.
Source	Monoclonal, Mouse,IgG
Purification	The antibody was affinity-purified from mouse antiserum by affinity-chromatography using epitope-specific immunogen.
Dilution	WB 1:500-2000
Concentration	1 mg/ml
Purity	≥90%
Storage Stability	-20°C/1 year
Synonyms	RRS1; KIAA0112; RRR; Ribosome biogenesis regulatory protein homolog
Observed Band	41kD
Cell Pathway	Nucleus, nucleolus .
Tissue Specificity	Bone marrow,Cervix carcinoma,Lung,Uterus,
Function	function:Involved in ribosome biogenesis.,similarity:Belongs to the RRS1 family.,
Background	function:Involved in ribosome biogenesis.,similarity:Belongs to the RRS1 family.,
matters needing attention	Avoid repeated freezing and thawing!
Usage suggestions	This product can be used in immunological reaction related experiments. For more information, please consult technical personnel.

Nanjing BYabscience technology Co.,Ltd



## Products Images



Western Blot analysis of various cells using RRS1  
Monoclonal Antibody

Nanjing BYabs science technology Co.,Ltd

网址: [www.njbybio.com](http://www.njbybio.com)

官方热线: 025-5229-8998

监督电话: 15950492658