



RPAP2 Monoclonal Antibody

Catalog No	BYmab-01994
Isotype	IgG
Reactivity	Human;Rat;Mouse;
Applications	WB
Gene Name	RPAP2
Protein Name	Putative RNA polymerase II subunit B1 CTD phosphatase RPAP2
Immunogen	The antiserum was produced against synthesized peptide derived from human RPAP2. AA range:460-509
Specificity	RPAP2 Monoclonal Antibody detects endogenous levels of RPAP2 protein.
Formulation	Liquid in PBS containing 50% glycerol, 0.5% BSA and 0.02% sodium azide.
Source	Monoclonal, Mouse,IgG
Purification	The antibody was affinity-purified from mouse antiserum by affinity-chromatography using epitope-specific immunogen.
Dilution	WB 1:500-2000
Concentration	1 mg/ml
Purity	≥90%
Storage Stability	-20°C/1 year
Synonyms	RPAP2; C1orf82; Putative RNA polymerase II subunit B1 CTD phosphatase RPAP2; RNA polymerase II-associated protein 2
Observed Band	70kD
Cell Pathway	Cytoplasm . Nucleus . Shuttles between the cytoplasm and the nucleus in a CRM1-dependent manner.
Tissue Specificity	Brain,
Function	function:Forms an interface between the RNA polymerase II enzyme and chaperone/scaffolding protein, suggesting that it is required to connect RNA polymerase II to regulators of protein complex formation.,similarity:Belongs to the RPAP2 family.,subunit:Tightly associated with the RNA polymerase II complex.,
Background	function:Forms an interface between the RNA polymerase II enzyme and chaperone/scaffolding protein, suggesting that it is required to connect RNA polymerase II to regulators of protein complex formation.,similarity:Belongs to the RPAP2 family.,subunit:Tightly associated with the RNA polymerase II complex.,

Nanjing BYabscience technology Co.,Ltd

网址: www.njbybio.com

官方热线: 025-5229-8998

监督电话: 15950492658



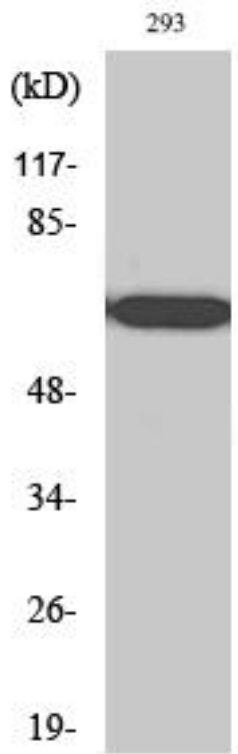
matters needing attention

Avoid repeated freezing and thawing!

Usage suggestions

This product can be used in immunological reaction related experiments. For more information, please consult technical personnel.

Products Images



Western Blot analysis of various cells using RPAP2 Monoclonal Antibody