



# RGAG1 Monoclonal Antibody

Catalog No	BYmab-01981
Isotype	IgG
Reactivity	Human;Mouse
Applications	WB
Gene Name	RGAG1
Protein Name	Retrotransposon gag domain-containing protein 1
Immunogen	The antiserum was produced against synthesized peptide derived from human RGAG1. AA range:1331-1380
Specificity	RGAG1 Monoclonal Antibody detects endogenous levels of RGAG1 protein.
Formulation	Liquid in PBS containing 50% glycerol, 0.5% BSA and 0.02% sodium azide.
Source	Monoclonal, Mouse,IgG
Purification	The antibody was affinity-purified from mouse antiserum by affinity-chromatography using epitope-specific immunogen.
Dilution	WB 1:500-2000
Concentration	1 mg/ml
Purity	≥90%
Storage Stability	-20°C/1 year
Synonyms	RGAG1; KIAA1318; Retrotransposon gag domain-containing protein 1; Tumor antigen BJ-HCC-23
Observed Band	144kD
Cell Pathway	
Tissue Specificity	Brain,Carcinoma,
Function	
Background	RGAG1 (Retrotransposon Gag Domain Containing 1) is a Protein Coding gene. Diseases associated with RGAG1 include non-syndromic x-linked intellectual disability.
matters needing attention	Avoid repeated freezing and thawing!

Nanjing BYabscience technology Co.,Ltd

网址: [www.njbybio.com](http://www.njbybio.com)

官方热线: 025-5229-8998

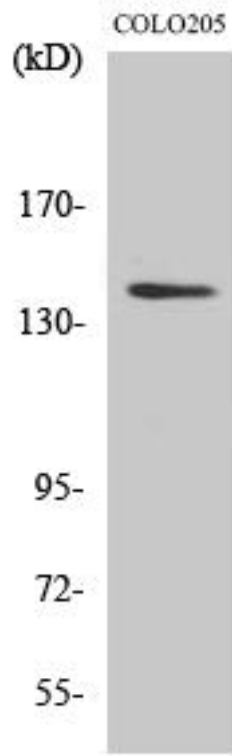
监督电话: 15950492658



### Usage suggestions

This product can be used in immunological reaction related experiments. For more information, please consult technical personnel.

## Products Images



Western Blot analysis of various cells using RGAG1 Monoclonal Antibody