



# RFX3 Monoclonal Antibody

Catalog No	BYmab-01980
Isotype	IgG
Reactivity	Human;Mouse
Applications	WB
Gene Name	RFX3
Protein Name	Transcription factor RFX3
Immunogen	The antiserum was produced against synthesized peptide derived from human RFX3. AA range:641-690
Specificity	RFX3 Monoclonal Antibody detects endogenous levels of RFX3 protein.
Formulation	Liquid in PBS containing 50% glycerol, 0.5% BSA and 0.02% sodium azide.
Source	Monoclonal, Mouse,IgG
Purification	The antibody was affinity-purified from mouse antiserum by affinity-chromatography using epitope-specific immunogen.
Dilution	WB 1:500-2000
Concentration	1 mg/ml
Purity	≥90%
Storage Stability	-20°C/1 year
Synonyms	RFX3; Transcription factor RFX3; Regulatory factor X 3
Observed Band	84kD
Cell Pathway	Nucleus .
Tissue Specificity	Muscle,Testis,
Function	function:Acts as a transcription factor. Represses transcription of MAP1A in non-neuronal cells but not in neuronal cells.,similarity:Belongs to the RFX family.,
Background	This gene is a member of the regulatory factor X gene family, which encodes transcription factors that contain a highly-conserved winged helix DNA binding domain. The protein encoded by this gene is structurally related to regulatory factors X1, X2, X4, and X5. It is a transcriptional activator that can bind DNA as a monomer or as a heterodimer with other RFX family members. Multiple transcript variants encoding different isoforms have been described for this gene. [provided by RefSeq, Aug 2013],

Nanjing BYabscience technology Co.,Ltd



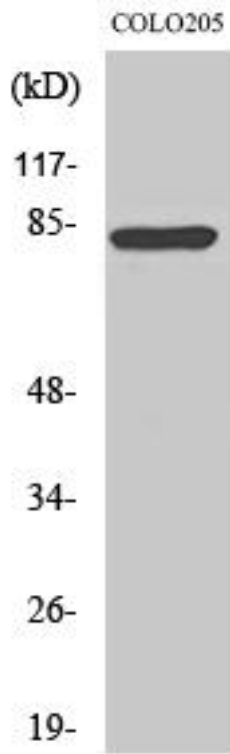
**matters needing attention**

Avoid repeated freezing and thawing!

**Usage suggestions**

This product can be used in immunological reaction related experiments. For more information, please consult technical personnel.

## Products Images



Western Blot analysis of various cells using RFX3 Monoclonal Antibody