



# RCL Monoclonal Antibody

Catalog No	BYmab-01971
Isotype	IgG
Reactivity	Human;Rat;Mouse;
Applications	WB
Gene Name	RCL
Protein Name	Deoxyribonucleoside 5'-monophosphate N-glycosidase
Immunogen	The antiserum was produced against synthesized peptide derived from human RCL. AA range:1-50
Specificity	RCL Monoclonal Antibody detects endogenous levels of RCL protein.
Formulation	Liquid in PBS containing 50% glycerol, 0.5% BSA and 0.02% sodium azide.
Source	Monoclonal, Mouse,IgG
Purification	The antibody was affinity-purified from mouse antiserum by affinity-chromatography using epitope-specific immunogen.
Dilution	WB 1:500-2000
Concentration	1 mg/ml
Purity	≥90%
Storage Stability	-20°C/1 year
Synonyms	RCL; C6orf108; Deoxyribonucleoside 5'-monophosphate N-glycosidase; c-Myc-responsive protein Rcl
Observed Band	22kD
Cell Pathway	Cytoplasm . Nucleus .
Tissue Specificity	Expressed at low levels in brain, colon, lung, peripheral blood leukocytes, placenta, small intestine, and thymus. Expressed at high levels in heart, kidney, liver, skeletal muscle and spleen. Overexpressed in a significant proportion of breast cancers.
Function	caution:The sequence shown here is derived from an Ensembl automatic analysis pipeline and should be considered as preliminary data.,function:May play a role during cellular proliferation and c-Myc-mediated transformation.,tissue specificity:Expression is elevated in lymphoid cells that overexpress c-Myc.,
Background	This gene was identified on the basis of its stimulation by c-Myc protein. The latter is a transcription factor that participates in the regulation of cell proliferation, differentiation, and apoptosis. The exact function of this gene is not known but

Nanjing BYabscience technology Co.,Ltd



studies in rat suggest a role in cellular proliferation and c-Myc-mediated transformation. Two alternative transcripts encoding different proteins have been described. [provided by RefSeq, Jul 2008],

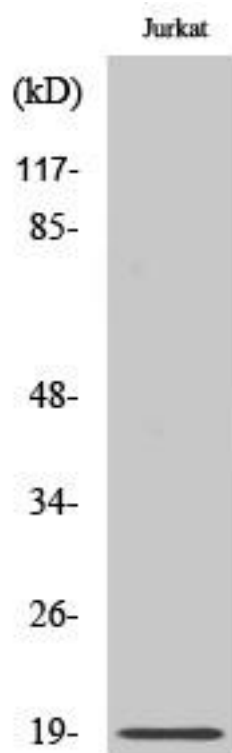
**matters needing attention**

Avoid repeated freezing and thawing!

**Usage suggestions**

This product can be used in immunological reaction related experiments. For more information, please consult technical personnel.

## Products Images



Western Blot analysis of various cells using RCL Monoclonal Antibody